

APPENDIX A – MINERAL RESOURCE ESTIMATE

Material	Class	Tonnes	Grade					Contained Metal				
			Ag	Au	Pb	Zn	AgEq	Ag	Au	Pb	Zn	AgEq
		(Mt)	(g/t)	(g/t)	(%)	(%)	(g/t)	(Moz)	(koz)	(Mlb)	(Mlb)	(Moz)
Oxide	Measured	29	29	0.07	0.23	0.27	49	27	67	148	171	45
	Indicated	37	24	0.06	0.25	0.29	44	28	74	207	241	53
	M&I	66	26	0.07	0.24	0.28	46	55	142	355	412	99
	Inferred	32	19	0.03	0.26	0.33	42	20	35	188	234	43
Sulphide	Measured	324	24	0.07	0.34	0.63	57	247	745	2,413	4,473	598
	Indicated	329	18	0.04	0.28	0.58	48	190	416	2,045	4,215	506
	M&I	653	21	0.06	0.31	0.60	53	437	1,161	4,458	8,687	1,104
	Inferred	116	12	0.02	0.16	0.35	30	45	86	418	906	111
TOTAL	Measured	353	24	0.07	0.33	0.60	57	274	812	2,561	4,644	643
	Indicated	366	19	0.04	0.28	0.55	47	218	490	2,252	4,456	559
	M&I	719	21	0.06	0.30	0.57	52	493	1,303	4,813	9,099	1,202
	Inferred	149	14	0.03	0.18	0.35	32	65	121	606	1,140	155

Supporting Technical Disclosure for Resource

- Mineral Resource Estimates are inclusive of Mineral Reserves.
- The previous Cordero mineral resource estimate (MRE) was completed in January 2023 for Cordero by RedDot. The current mineral resource estimate was calculated for Discovery Silver by RedDot, who is acting as this report's QP for mineral resources.
- Mineral resources that are not mineral reserves do not have demonstrated economic viability.
- The Resource is an in-pit resource containing a total of 868 Mt of Mineral Resource and 1,639 Mt of waste (below NSR\$7.25 cut off) for total tonnes of 2,507.Mt). The pit is constrained by a pit optimisation based on the following parameters:
 - Commodity prices: Ag - \$24.00/oz, Au - \$1,800/oz, Pb - \$1.10/lb, Zn - \$1.20/lb.
 - Metallurgical recoveries: Ag – 87%, Au – 18%, Pb – 89% and Zn – 88%. AgEq for sulphide mineralization and Ag – 59%, Au – 18%, Pb - 37% and Zn - 85% for oxide mineralization.
 - Operating costs:
 - Base mining costs of \$1.59/t for ore and \$1.59/t for waste were developed by AGP Mining Consultants Inc.
 - Processing costs of \$5.22/t for mill/flotation and G&A costs of \$0.86/t were developed by Ausenco Engineering Canada ULC.
 - Average pit slope assumption of 45°
- Sulphide and Oxide mineral resources are reported at a \$7.25/t NSR cut-off based on the approximate estimated processing and G&A cost for mineralization. NSR is defined as the net revenue from metal sales (taking into account metallurgical recoveries and payabilities) less treatment costs and refining charges.
- Individual metals are reported at 100% of in-situ grade.
- AgEq for sulphide mineral resources is calculated as $Ag + (Au \times 15.52) + (Pb \times 32.15) + (Zn \times 34.68)$; these factors are based on commodity prices of Ag - \$24.00/oz, Au - \$1,800/oz, Pb - \$1.10/lb, Zn - \$1.20/lb and assumed recoveries of Ag – 87%, Au – 18%, Pb – 89% and Zn – 88%. AgEq for oxide mineral resources is calculated as $Ag + (Au \times 22.88) + (Pb \times 19.71) + (Zn \times 49.39)$; these factors are based on commodity prices of Ag - \$24.00/oz, Au - \$1,800/oz, Pb - \$1.10/lb and Zn - \$1.20/lb and assumed recoveries of Ag – 59%, Au – 18%, Pb - 37% and Zn - 85%.
- There are no known factors or issues that materially affect the mineral resource and mineral reserve estimates other than normal risks faced by mining projects in Mexico in terms of legal, environmental, permitting, taxation, socio-economic, and political factors. Additional risk factors are listed in the "Cautionary Note Regarding Forward-Looking Statements" section in this news release
- The effective date of the Resource is August 31, 2023, and is based on drilling through end of March 2023. A full technical report will be prepared in accordance with NI 43-101 and will be filed on SEDAR within 45 days of this press release.

APPENDIX B – MINERAL RESERVE ESTIMATE

Material	Class	Tonnes (Mt)	Grade				Contained Metal			
			Ag	Au	Pb	Zn	Ag	Au	Pb	Zn
			(g/t)	(g/t)	(%)	(%)	(Moz)	(Moz)	(Bib)	(Bib)
Oxide	Proven	10	46	0.08	0.35	0.38	15	0.03	0.08	0.09
	Probable	10	40	0.09	0.40	0.42	13	0.03	0.09	0.09
	Total P&P	20	43	0.08	0.37	0.40	28	0.05	0.17	0.18
Sulphide	Proven	212	29	0.09	0.42	0.74	199	0.61	1.96	3.48
	Probable	95	24	0.06	0.40	0.73	74	0.18	0.83	1.53
	Total P&P	307	28	0.08	0.41	0.74	274	0.78	2.79	5.00
TOTAL	Proven	223	30	0.09	0.42	0.73	214	0.64	2.04	3.57
	Probable	104	26	0.06	0.40	0.70	87	0.20	0.91	1.62
	Total P&P	327	29	0.08	0.41	0.72	302	0.84	2.96	5.18

Supporting Technical Disclosure for Reserves

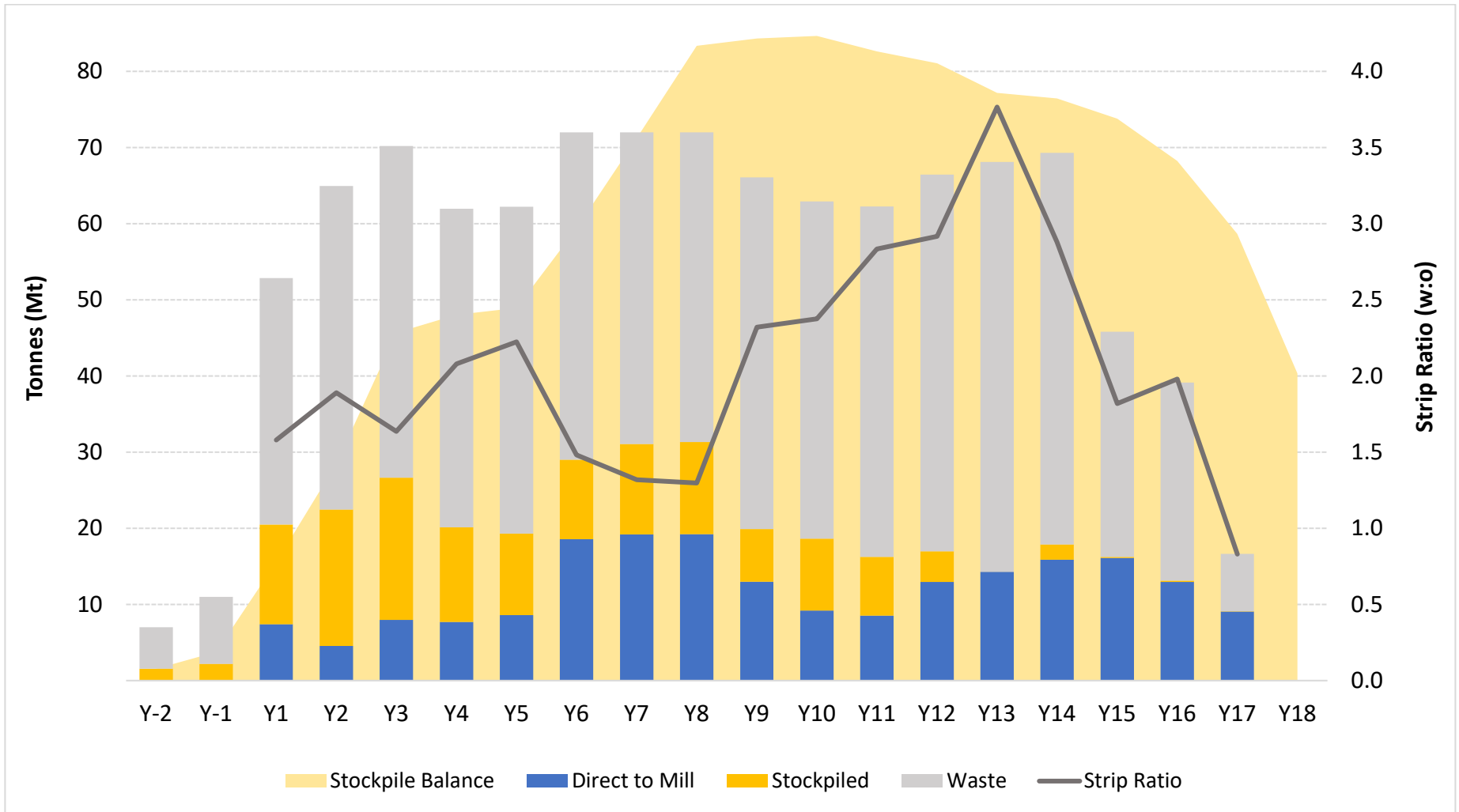
- This mineral reserve estimate has an effective date of February 16, 2024, and is based on the mineral resource estimate, for Discovery Silver by RedDot that has an effective date of August 31, 2023.
- The Mineral Reserve estimate was completed under the supervision of Willie Hamilton, P.Eng. of AGP, who is a Qualified Person as defined under NI 43-101.
- Mineral Reserves are stated within the final pit designs based on a US\$20.00/oz silver price, US\$1,600/oz gold price, US\$0.95/lb lead price and US\$1.20/lb zinc price.
- An NSR cut-off of US\$10.00/t was used to estimate reserves. The life-of-mine mining cost averaged US\$2.35/t mined. Processing, G&A and closure costs were US\$7.28/t ore. The metallurgical recoveries were varied according to head grade and concentrate grades. Lead concentrate recoveries for sulphide material were approximately 87.5%, 73.9% and 12.6% for lead, silver and gold respectively. Zinc concentrate recoveries for sulphide material were approximately 95.0%, 14.3% and 9.5% for zinc, silver and gold respectively. Oxide recoveries to zinc concentrates were 85%, 9% and 8% for zinc, silver, and gold respectively. Oxide recoveries to lead concentrates were 37%, 50% and 10% for lead, silver, and gold respectively.

APPENDIX C: AFTER-TAX NPV / IRR / PAYBACK SENSITIVITIES

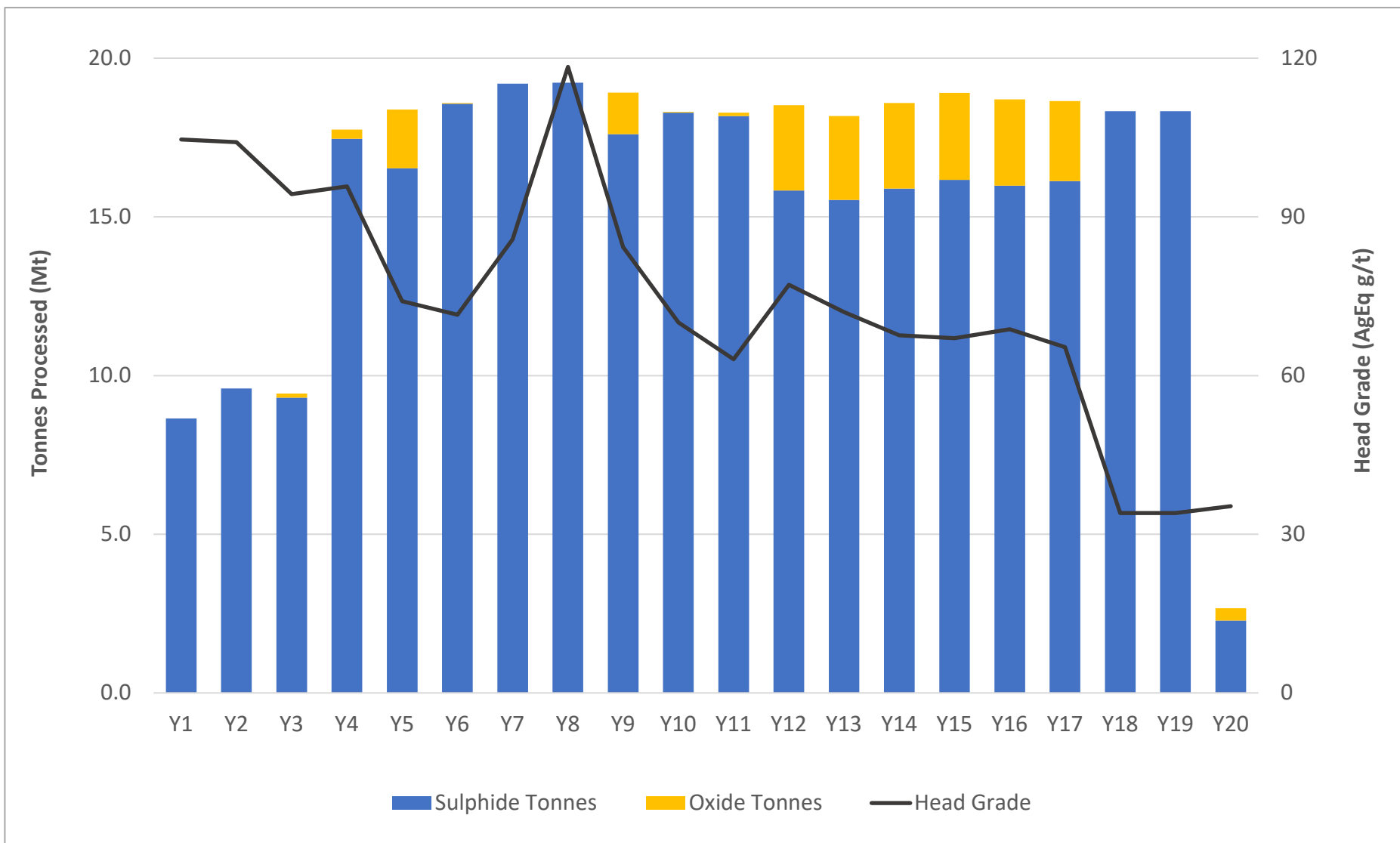
Sensitivity of the Project's NPV, IRR and payback at different Ag and Zn price assumptions is outlined in the table below. For these sensitivities the Au and Pb prices have been fixed at \$1,600/oz and \$1.00/lb respectively. The Base Case scenario for the FS is highlighted in grey below and assumes Ag - \$22.00/oz, Au - \$1,600/oz, Pb - \$1.00/lb and Zn - \$1.20/lb.

		Ag (\$/oz)														
		\$18.00			\$20.00			\$22.00			\$25.00			\$30.00		
		NPV (5%) <i>(US\$M)</i>	IRR (%)	Payback <i>(yrs)</i>	NPV (5%) <i>(US\$M)</i>	IRR (%)	Payback <i>(yrs)</i>	NPV (5%) <i>(US\$M)</i>	IRR (%)	Payback <i>(yrs)</i>	NPV (5%) <i>(US\$M)</i>	IRR (%)	Payback <i>(yrs)</i>	NPV (5%) <i>(US\$M)</i>	IRR (%)	Payback <i>(yrs)</i>
Zn (\$/lb)	\$1.05	602	14.7	6.9	784	17.2	6.3	965	19.7	5.8	1,237	23.1	4.8	1,690	28.5	4.1
	\$1.10	673	15.6	6.7	854	18.1	6.2	1,036	20.4	5.6	1,308	23.8	4.8	1,761	29.2	4.0
	\$1.20	814	17.4	6.4	996	19.7	5.9	1,177	22.0	5.2	1,449	25.2	4.6	1,902	30.5	3.9
	\$1.30	955	18.9	6.1	1,137	21.2	5.5	1,318	23.4	4.9	1,590	26.6	4.4	2,043	31.7	3.8
	\$1.45	1,167	21.2	5.7	1,348	23.4	5.1	1,530	25.5	4.7	1,802	28.6	4.2	2,254	33.5	3.7

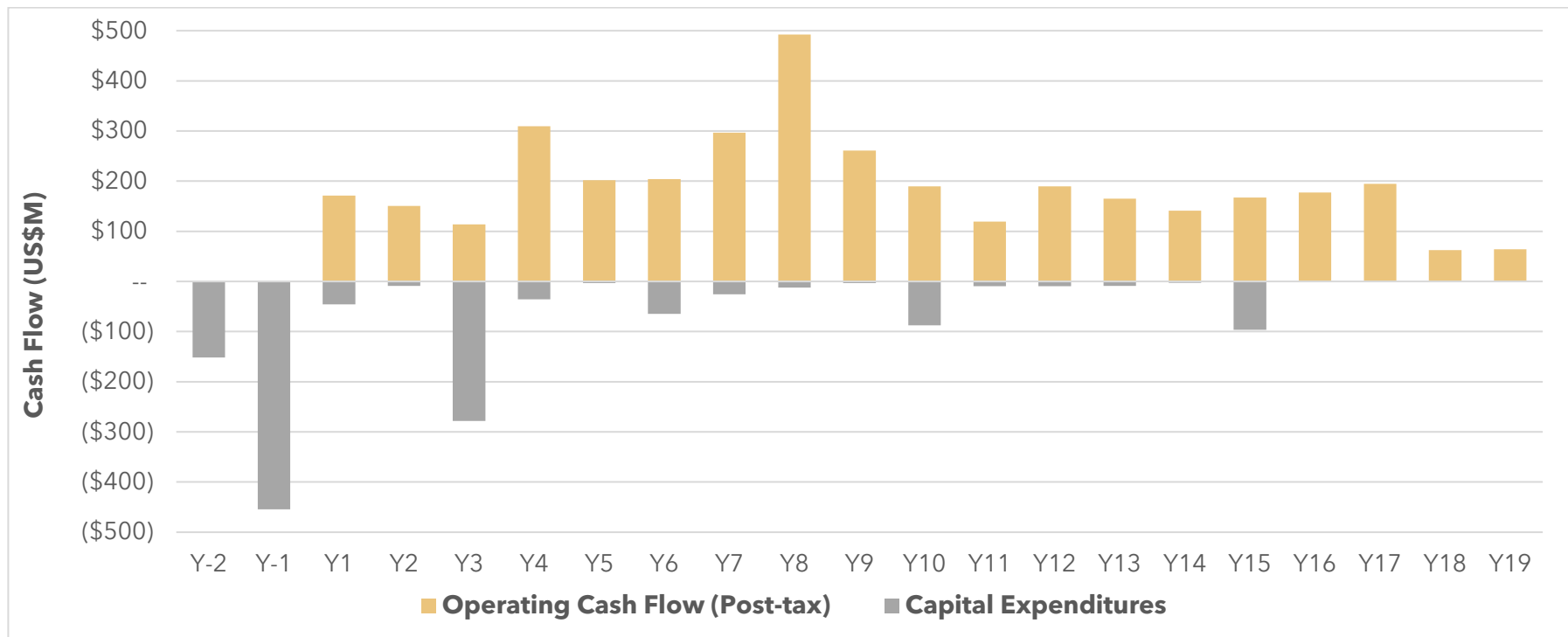
APPENDIX D - LOM MINE PLAN SUMMARY



APPENDIX E - LOM PROCESS THROUGHPUT SUMMARY

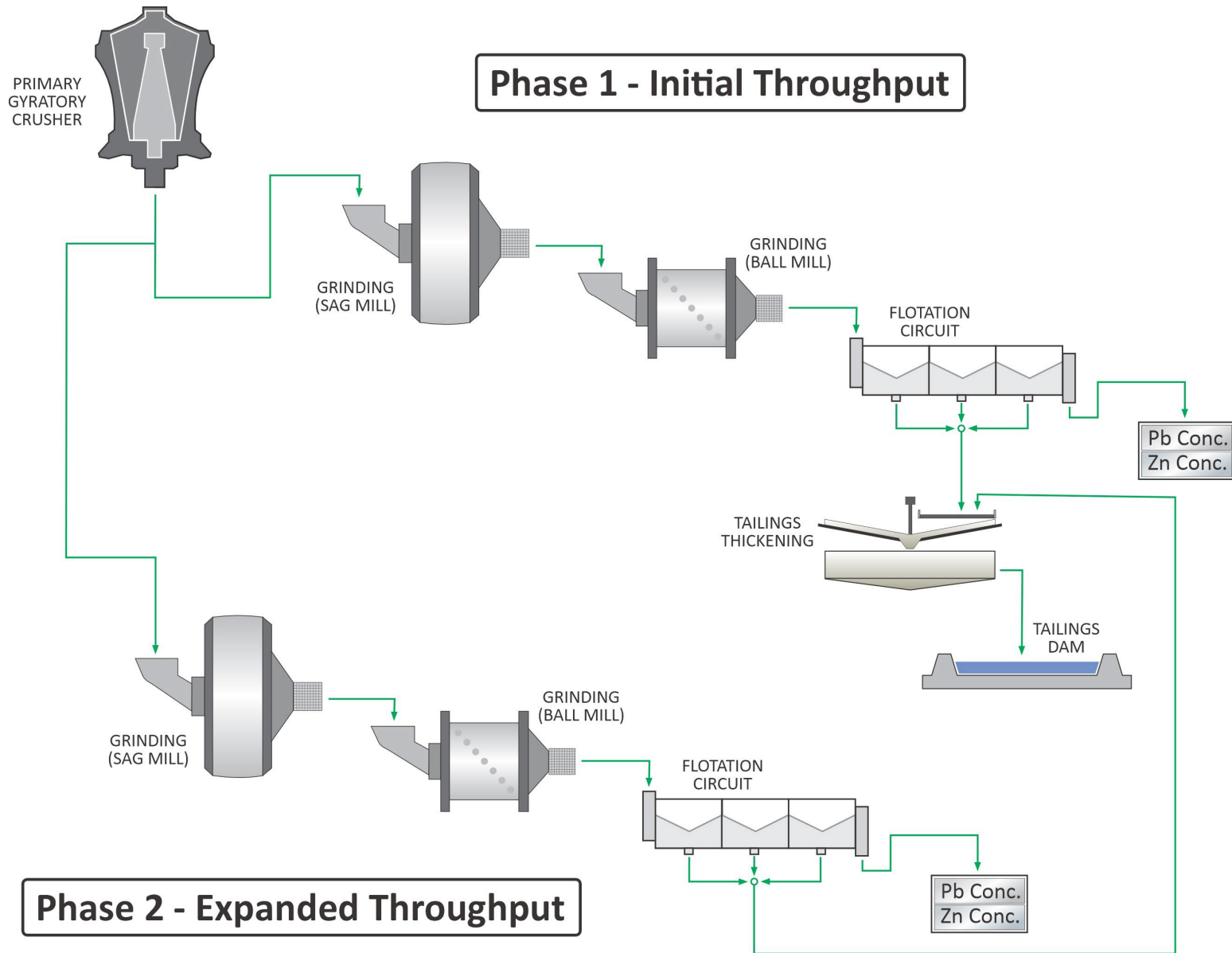


APPENDIX F – AFTER-TAX FREE CASH FLOW



APPENDIX G - SIMPLIFIED PROCESS FLOWSHEETS

PHASE 1 – 26,000 tpd nameplate capacity / PHASE 2 – 51,000 tpd nameplate capacity

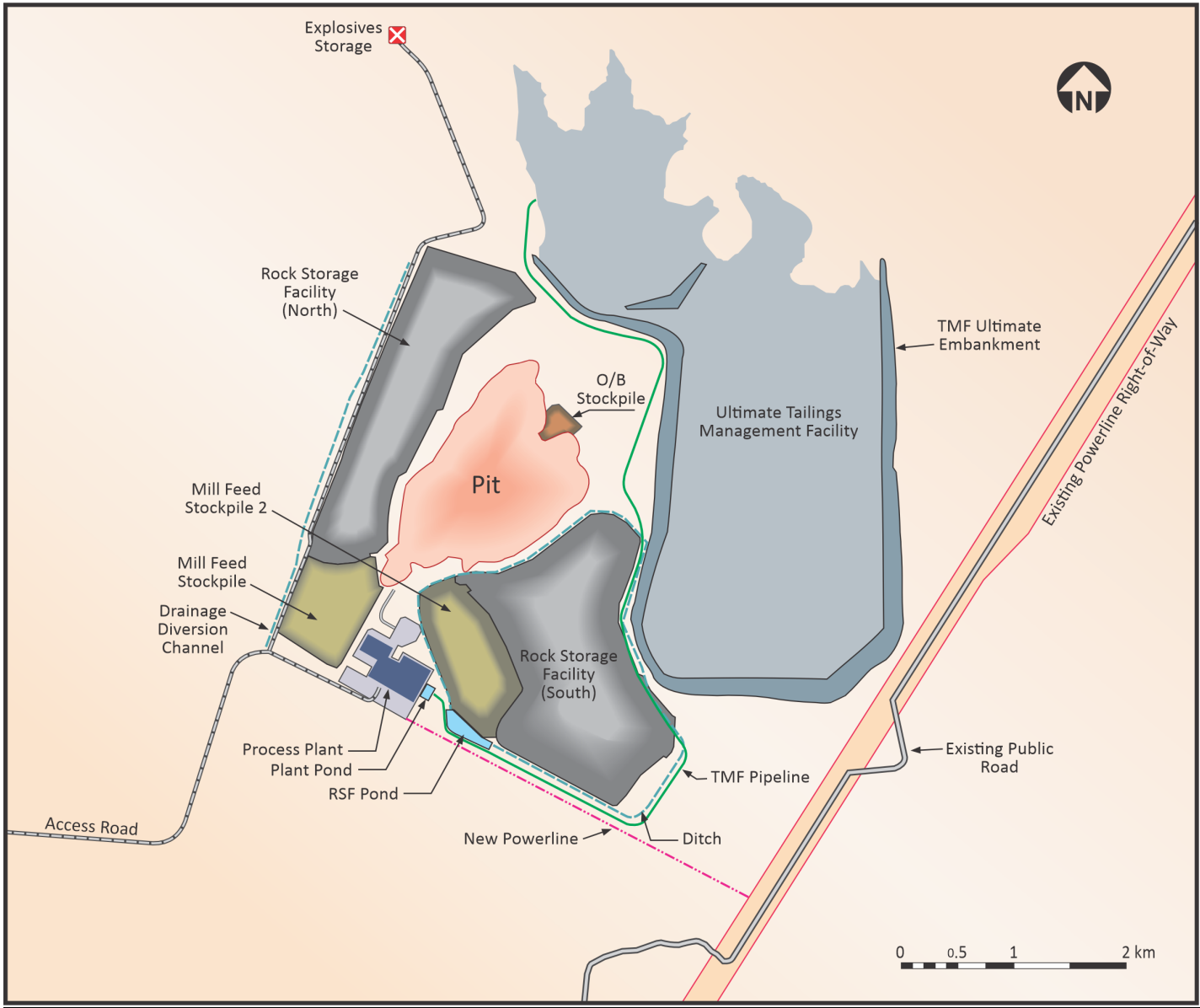


APPENDIX H – METALLURGICAL BALANCE SUMMARY

	UNITS	PHASE 1				PHASE 2								LOM			
		Years 1 - 4				Years 5 - 12				Years 13 - 19							
		Ag	Au	Pb	Zn	Ag	Au	Pb	Zn	Ag	Au	Pb	Zn	Ag	Au	Pb	Zn
MET BALANCE																	
Average head grade	g/t or %	42	0.19	0.57	0.67	30	0.07	0.44	0.86	23	0.06	0.32	0.57	29	0.08	0.41	0.72
Recovered to Pb Con	%	83	18	91	5	77	18	88	4	70	18	84	4	77	18	86	5
Recovered to Zn Con	%	8	10	nm	85	10	10	nm	86	11	10	nm	85	10	10	nm	85
Tailings	%	9	72	nm	10	13	72	nm	10	19	72	nm	11	13	72	nm	10
Total	%	100	100	100	100	100	100	100	100	100	100	100	100	100	100	100	100
CONCENTRATE GRADES																	
Pb Concentrate	g/t or %	3,750	3.86	57	-	3,096	1.60	52	-	2,548	1.82	44	-	3,062	2.05	50	-
Zn Concentrate	g/t or %	302	1.61	-	50	198	0.43	-	51	273	0.59	-	50	231	0.62	-	50

nm – Pb recovery into the Zn concentrate was not modelled for the purposes of this Study

APPENDIX I - SITE LAYOUT:



APPENDIX J – PRODUCTION & CASH FLOW SCHEDULE:

	Units	Total/Avg	Y-2	Y-1	Y1	Y2	Y3	Y4	Y5	Y6	Y7	Y8	Y9	Y10	Y11	Y12	Y13	Y14	Y15	Y16	Y17	Y18	Y19	Y20	
MINING																									
Mineralized Material Mined*	mt	347	2	2	20	22	27	20	19	29	31	31	20	19	16	17	14	18	16	13	9	--	--	--	
Waste Mined	mt	696	5	9	32	42	44	42	43	43	41	41	46	44	46	49	54	51	30	26	8	--	--	--	
Total Material Mined	mt	1,043	7	11	53	65	70	62	62	72	72	72	66	63	62	66	68	69	46	39	17	--	--	--	
Mining Rate	ktpd	150	19	30	145	178	192	170	170	197	197	197	181	172	171	182	187	190	125	107	46	--	--	--	
Strip Ratio	w:o	2.01	3.5	4.1	1.6	1.9	1.6	2.1	2.2	1.5	1.3	1.3	2.3	2.4	2.8	2.9	3.8	2.9	1.8	2.0	0.8	--	--	--	
*Mineralized material mined includes 20Mt of above cutoff oxides that are not processed. For ore processed (ie: reserves), see "Processing" section below																									
PROCESSING																									
Oxides – Mill Feed:																									
Ore Tonnes	mt	20	--	--	--	--	0.1	0.3	1.9	0.0	--	--	1.3	0.0	0.1	2.7	2.6	2.7	2.7	2.7	2.5	--	--	0.4	
Ore Grades:																									
Ag	g/t	43.0	--	--	--	--	50.8	64.7	46.0	46.0	--	--	44.5	32.1	48.1	42.4	42.6	42.6	42.6	42.6	42.6	42.6	--	--	22.8
Au	g/t	0.08	--	--	--	--	0.09	0.06	0.09	0.09	--	--	0.09	0.16	0.03	0.08	0.08	0.08	0.08	0.08	0.08	0.08	--	--	0.07
Pb	%	0.37%	--	--	--	--	0.68%	0.63%	0.34%	0.34%	--	--	0.60%	0.44%	0.19%	0.36%	0.36%	0.36%	0.36%	0.36%	0.36%	0.36%	--	--	0.20%
Zn	%	0.40%	--	--	--	--	0.93%	0.53%	0.34%	0.34%	--	--	0.68%	0.73%	0.41%	0.39%	0.38%	0.38%	0.38%	0.38%	0.38%	0.38%	--	--	0.24%
AgEq	g/t	76	--	--	--	--	113	109	76	75	--	--	95	85	72	74	74	74	74	74	74	74	--	--	43
Sulphides – Mill Feed:																									
Ore Tonnes	mt	307	--	--	9	10	9	17	17	19	19	19	18	18	18	16	16	16	16	16	16	18	18	2	
Mill Head Grade:																									
Ag	g/t	27.7	--	--	44.8	44.3	38.9	39.9	31.7	28.1	31.4	41.7	27.0	25.2	23.1	27.0	24.8	24.3	25.4	23.6	22.1	12.6	12.6	12.6	
Au	g/t	0.08	--	--	0.19	0.25	0.15	0.19	0.10	0.06	0.07	0.08	0.06	0.05	0.05	0.06	0.05	0.06	0.06	0.06	0.06	0.05	0.05	0.05	
Pb	%	0.41%	--	--	0.59%	0.61%	0.54%	0.56%	0.39%	0.36%	0.48%	0.73%	0.48%	0.40%	0.28%	0.42%	0.43%	0.38%	0.36%	0.38%	0.40%	0.16%	0.16%	0.16%	
Zn	%	0.74%	--	--	0.73%	0.61%	0.73%	0.65%	0.61%	0.75%	0.92%	1.29%	0.99%	0.77%	0.74%	0.89%	0.80%	0.69%	0.66%	0.75%	0.69%	0.35%	0.35%	0.35%	
AgEq	g/t	74	--	--	105	104	94	96	74	71	86	118	83	70	63	78	72	67	66	68	64	34	34	34	
TOTAL ORE - Mill Feed:																									
Ore Tonnes	mt	327	--	--	9	10	9	18	18	19	19	19	19	18	18	19	18	19	19	19	19	18	18	3	
Mill Head Grade:																									
Ag	g/t	29	--	--	45	44	39	40	33	28	31	42	28	25	23	29	27	27	28	26	25	13	13	14	
Au	g/t	0.08	--	--	0.19	0.25	0.15	0.19	0.10	0.06	0.07	0.08	0.06	0.05	0.05	0.06	0.05	0.06	0.06	0.06	0.05	0.05	0.05	0.05	
Pb	%	0.41%	--	--	0.59%	0.61%	0.55%	0.56%	0.38%	0.36%	0.48%	0.73%	0.49%	0.40%	0.28%	0.41%	0.42%	0.38%	0.36%	0.38%	0.39%	0.16%	0.16%	0.16%	
Zn	%	0.72%	--	--	0.73%	0.61%	0.73%	0.65%	0.59%	0.01	0.92%	1.29%	0.97%	0.01	0.74%	0.82%	0.74%	0.65%	0.62%	0.70%	0.65%	0.35%	0.35%	0.33%	
AgEq	g/t	74	--	--	105	104	94	96	74	71	86	118	84	70	63	77	72	68	67	69	65	34	34	35	
Lead/Silver Conc. – Recovery:																									
Ag	%	77%	--	--	83%	84%	82%	82%	74%	75%	80%	86%	78%	77%	71%	73%	73%	72%	71%	72%	72%	58%	58%	58%	
Au	%	18%	--	--	18%	18%	18%	18%	18%	18%	18%	18%	18%	18%	18%	18%	18%	18%	18%	18%	18%	18%	18%	18%	
Pb	%	86%	--	--	92%	92%	90%	90%	84%	88%	90%	93%	86%	89%	85%	83%	83%	81%	81%	81%	83%	77%	77%	70%	
Zinc Conc. – Recovery:																									
Ag	%	10%	--	--	8%	8%	9%	8%	10%	10%	9%	7%	9%	10%	12%	10%	10%	11%	11%	11%	10%	15%	15%	14%	
Au	%	10%	--	--	10%	10%	10%	10%	10%	10%	10%	10%	10%	10%	10%	10%	10%	10%	10%	10%	10%	10%	10%	10%	
Zn	%	85%	--	--	85%	84%	85%	84%	84%	85%	86%	87%	86%	85%	85%	86%	85%	85%	84%	85%	85%	78%	78%	79%	

	Units	Total/Avg	Y-2	Y-1	Y1	Y2	Y3	Y4	Y5	Y6	Y7	Y8	Y9	Y10	Y11	Y12	Y13	Y14	Y15	Y16	Y17	Y18	Y19	Y20
PRODUCTION PROFILE																								
METAL PRODUCED:																								
Ag – Ag/Pb Concentrate	moz	229	--	--	10	11	10	19	14	13	16	22	13	11	10	13	12	12	12	11	11	4	4	1
Au – Ag/Pb Concentrate	koz	153	--	--	10	14	8	20	10	7	8	9	7	5	5	7	6	7	7	7	6	5	5	1
Pb – Ag/Pb Concentrate	mlbs	2,581	--	--	104	118	102	197	131	128	182	286	175	143	96	137	139	126	121	126	133	63	63	9
AgEq – Ag/Pb Concentrate	moz	358	--	--	16	18	15	29	21	19	24	36	22	18	14	20	18	18	18	18	17	8	8	1
Ag – Zn Concentrate	moz	30	--	--	1	1	1	2	2	2	2	2	2	1	2	2	2	2	2	2	2	1	1	0
Au – Zn Concentrate	koz	80	--	--	5	7	4	10	5	3	4	5	4	3	3	4	3	4	4	4	3	3	3	0
Zn – Zn Concentrate	mlbs	4,437	--	--	118	110	130	217	203	259	335	480	351	264	252	287	253	226	221	245	228	122	122	17
AgEq – Zn Concentrate	moz	277	--	--	8	8	8	15	13	16	20	28	21	16	16	18	16	14	14	15	14	8	8	1
Ag – Total	moz	259	--	--	11	13	11	21	17	14	17	24	15	13	11	15	13	13	14	13	12	5	5	1
Au – Total	koz	233	--	--	15	21	12	30	16	10	12	13	10	8	8	10	9	11	11	10	9	8	8	1
Pb – Total	mlbs	2,581	--	--	104	118	102	197	131	128	182	286	175	143	96	137	139	126	121	126	133	63	63	9
Zn – Total	mlbs	4,437	--	--	118	110	130	217	203	259	335	480	351	264	252	287	253	226	221	245	228	122	122	17
AgEq – Total Metal Produced	moz	635	--	--	24	25	23	44	35	35	45	64	43	34	30	37	34	32	32	33	33	16	16	2
METAL PAYABLE:																								
Ag – Ag/Pb Concentrate	moz	218	--	--	10	11	9	18	14	12	15	21	13	11	9	12	11	11	11	11	10	4	4	1
Au – Ag/Pb Concentrate	koz	78	--	--	7	11	6	15	6	3	3	2	2	1	2	3	2	3	3	3	2	3	3	0
Pb – Ag/Pb Concentrate	mlbs	2,427	--	--	98	112	97	187	122	120	172	272	165	135	90	129	130	118	113	118	125	58	58	9
AgEq – Ag/Pb Concentrate	moz	334	--	--	15	17	14	27	20	18	23	34	20	17	13	18	17	17	17	16	16	7	7	1
Ag – Zn Concentrate	moz	12	--	--	0	1	0	1	1	1	1	0	0	1	1	1	1	1	1	1	1	1	1	0
Au – Zn Concentrate	koz	7	--	--	1	3	0	3	--	--	--	--	--	--	--	--	--	--	--	--	--	--	--	--
Zn – Zn Concentrate	mlbs	3,733	--	--	99	92	109	182	170	218	282	406	296	222	212	242	213	190	185	206	191	102	102	14
AgEq – Zn Concentrate	moz	217	--	--	6	6	6	11	10	13	16	23	17	13	12	14	12	11	11	12	11	6	6	1
Ag – Total	moz	230	--	--	10	11	10	19	15	13	15	21	13	11	10	13	12	12	12	12	11	5	5	1
Au – Total	koz	86	--	--	8	14	6	17	6	3	3	2	2	1	2	3	2	3	3	3	2	3	3	0
Pb – Total	mlbs	2,427	--	--	98	112	97	187	122	120	172	272	165	135	90	129	130	118	113	118	125	58	58	9
Zn – Total	mlbs	3,733	--	--	99	92	109	182	170	218	282	406	296	222	212	242	213	190	185	206	191	102	102	14
AgEq – Total Metal Payable	moz	550	--	--	21	23	20	39	30	30	39	56	37	30	26	32	29	28	28	28	27	13	13	2

	Units	Total/Avg	Y-2	Y-1	Y1	Y2	Y3	Y4	Y5	Y6	Y7	Y8	Y9	Y10	Y11	Y12	Y13	Y14	Y15	Y16	Y17	Y18	Y19	Y20
REVENUE																								
OXIDES + SULPHIDES:																								
Ag Revenue	US\$mm	\$5,065	--	--	\$228	\$251	\$212	\$415	\$325	\$280	\$337	\$472	\$289	\$251	\$216	\$283	\$261	\$259	\$271	\$253	\$240	\$102	\$102	\$16
Au Revenue	US\$mm	\$137	--	--	\$14	\$22	\$9	\$28	\$10	\$4	\$5	\$3	\$3	\$2	\$3	\$4	\$2	\$5	\$5	\$4	\$3	\$5	\$5	\$1
Pb Revenue	US\$mm	\$2,427	--	--	\$98	\$112	\$97	\$187	\$122	\$120	\$172	\$272	\$165	\$135	\$90	\$129	\$130	\$118	\$113	\$118	\$125	\$58	\$58	\$9
Zn Revenue	US\$mm	\$4,480	--	--	\$119	\$111	\$131	\$218	\$204	\$261	\$338	\$487	\$355	\$266	\$254	\$290	\$256	\$228	\$222	\$247	\$230	\$123	\$123	\$17
Gross Revenue	US\$mm	\$12,109	--	--	\$458	\$496	\$449	\$847	\$663	\$665	\$853	\$1,234	\$812	\$653	\$562	\$706	\$648	\$609	\$612	\$623	\$597	\$288	\$288	\$43
Treatment & Refining	US\$mm	\$1,296	--	--	\$41	\$42	\$43	\$77	\$66	\$73	\$93	\$131	\$93	\$74	\$67	\$79	\$73	\$67	\$66	\$70	\$67	\$35	\$35	\$5
Total Penalties	US\$mm	\$43	--	--	\$1	\$1	\$1	\$2	\$2	\$2	\$3	\$5	\$4	\$3	\$2	\$3	\$2	\$2	\$2	\$2	\$2	\$1	\$1	\$0
Net Revenue - Total	US\$mm	\$10,769	--	--	\$416	\$453	\$405	\$769	\$595	\$590	\$756	\$1,098	\$715	\$577	\$493	\$624	\$573	\$540	\$543	\$551	\$528	\$252	\$252	\$38
OPERATING COSTS																								
UNIT COSTS:																								
Mine (Incl. Rehandling)	US\$/t	\$2.35	--	--	\$2.42	\$2.33	\$2.36	\$2.55	\$2.48	\$1.95	\$2.03	\$2.17	\$2.20	\$2.19	\$2.28	\$2.29	\$2.15	\$2.21	\$2.65	\$2.81	\$3.72	\$0.97	\$0.82	\$1.12
Processing	US\$/t	\$6.28	--	--	\$6.87	\$6.72	\$6.90	\$6.13	\$6.25	\$6.21	\$6.14	\$6.17	\$6.20	\$6.30	\$6.30	\$6.26	\$6.27	\$6.25	\$6.20	\$6.23	\$6.24	\$6.28	\$6.28	\$6.28
Site G&A Costs	US\$/t	\$0.59	--	--	\$1.18	\$1.07	\$1.08	\$0.56	\$0.54	\$0.54	\$0.52	\$0.52	\$0.53	\$0.55	\$0.55	\$0.54	\$0.55	\$0.54	\$0.53	\$0.54	\$0.54	\$0.55	\$0.55	\$0.55
OPERATING COSTS INCURRED:																								
Mine (Incl. Rehandling)	US\$mm	\$2,406	--	--	\$128	\$151	\$166	\$158	\$154	\$140	\$146	\$156	\$145	\$138	\$142	\$152	\$146	\$153	\$121	\$110	\$62	\$18	\$15	\$3
Processing	US\$mm	\$2,056	--	--	\$59	\$64	\$65	\$109	\$115	\$115	\$118	\$119	\$117	\$115	\$115	\$116	\$114	\$116	\$117	\$116	\$116	\$115	\$115	\$17
Site G&A Costs	US\$mm	\$192	--	--	\$10	\$10	\$10	\$10	\$10	\$10	\$10	\$10	\$10	\$10	\$10	\$10	\$10	\$10	\$10	\$10	\$10	\$10	\$10	\$1
Total Site Operating Costs	US\$mm	\$4,655	--	--	\$198	\$226	\$241	\$277	\$279	\$266	\$274	\$285	\$273	\$263	\$267	\$278	\$270	\$279	\$249	\$236	\$188	\$143	\$140	\$21
NSR - Government	US\$mm	\$25	--	--	\$1	\$1	\$1	\$2	\$2	\$1	\$2	\$2	\$1	\$1	\$1	\$1	\$1	\$1	\$1	\$1	\$1	\$1	\$1	\$0
Concentrate Transport	US\$mm	\$1,043	--	--	\$32	\$33	\$34	\$60	\$51	\$58	\$74	\$104	\$76	\$60	\$53	\$64	\$59	\$55	\$53	\$57	\$56	\$30	\$30	\$4
Total Operating Costs	US\$mm	\$5,722	--	--	\$230	\$260	\$276	\$339	\$332	\$325	\$350	\$391	\$350	\$325	\$322	\$343	\$331	\$335	\$304	\$295	\$245	\$174	\$171	\$26
CASH COSTS:																								
Co-Product Basis:																								
Operating Cash Costs	US\$/oz	\$8.46	--	--	\$9.49	\$10.02	\$11.81	\$7.18	\$9.27	\$8.78	\$7.08	\$5.07	\$7.38	\$8.87	\$10.46	\$8.67	\$9.17	\$10.08	\$8.95	\$8.34	\$6.94	\$10.92	\$10.72	\$10.89
Total Cash Costs	US\$/oz	\$12.83	--	--	\$13.10	\$13.44	\$15.66	\$10.84	\$13.27	\$13.25	\$11.51	\$9.38	\$12.10	\$13.51	\$15.30	\$13.25	\$13.77	\$14.59	\$13.38	\$12.97	\$11.58	\$16.01	\$15.81	\$15.82
All-in Sustaining Costs	US\$/oz	\$13.47	--	--	\$13.49	\$13.84	\$16.45	\$11.01	\$13.39	\$15.38	\$11.73	\$9.60	\$12.19	\$16.46	\$15.68	\$13.54	\$14.07	\$14.70	\$16.86	\$13.00	\$11.62	\$16.08	\$15.84	\$16.02

