

o o o o o

# Cordero - A World Leading Silver Development Project

## Precious Metals Summit

September 10 - 13, 2024

TSX: DSV | OTCQX: DSVSF | [DISCOVERYSILVER.COM](https://www.discoverysilver.com)

Discovery silver



# Forward Looking Statement & NI 43-101 Disclosure

This presentation may include forward-looking statements that are subject to inherent risks and uncertainties. All statements within this presentation, other than statements of historical fact, are to be considered forward looking. Although Discovery believes the expectations expressed in such forward-looking statements are based on reasonable assumptions, such statements are not guarantees of future performance and actual results or developments may differ materially from those described in forward-looking statements. Statements include but are not limited to the feasibility of the Project and its attractive economics and significant exploration upside; construction decision and development of the Project, timing and results of the feasibility study and the anticipated capital and operating costs, sustaining costs, net present value, internal rate of return, the method of mining the Project, payback period, process capacity, average annual metal production, average process recoveries, concession renewal, permitting of the Project, anticipated mining and processing methods, feasibility study production schedule and metal production profile, anticipated construction period, anticipated mine life, expected recoveries and grades, anticipated production rates, infrastructure, social and environmental impact studies, the completion of key de-risking items, including the timing of receipt permits, availability of water and power, availability of labour, job creation and other local economic benefits, tax rates and commodity prices that would support development of the Project, and other statements that express management's expectations or estimates of future performance, operational, geological or financial results. Information concerning mineral resource/reserve estimates and the economic analysis thereof contained in the results of the feasibility study are also forward-looking statements in that they reflect a prediction of the mineralization that would be encountered, and the results of mining, if a mineral deposit were developed and mined. Forward-looking statements are statements that are not historical facts which address events, results, outcomes or developments that the Company expects to occur. Forward-looking statements are based on the beliefs, estimates and opinions of the Company's management on the date the statements are made and they involve a number of risks and uncertainties.

Factors that could cause actual results to differ materially from those described in forward-looking statements include fluctuations in market prices, including metal prices, continued availability of capital and financing, and general economic, market or business conditions, the actual results of current and future exploration activities; changes to current estimates of mineral reserves and mineral resources; conclusions of economic and geological evaluations; changes in project parameters as plans continue to be refined; the speculative nature of mineral exploration and development; risks in obtaining and maintaining necessary licenses, permits and authorizations for the Company's development stage and operating assets; operations may be exposed to new diseases, epidemics and pandemics, including any ongoing or future effects of COVID-19 (and any related ongoing or future regulatory or government responses) and its impact on the broader market and the trading price of the Company's shares; provincial and federal orders or mandates (including with respect to mining operations generally or auxiliary businesses or services required for operations) in Mexico, all of which may affect many aspects of the Company's operations including the ability to transport personnel to and from site, contractor and supply availability and the ability to sell or deliver mined silver; changes in national and local government legislation, controls or regulations; failure to comply with environmental and health and safety laws and regulations; labour and contractor availability (and being able to secure the same on favourable terms); disruptions in the maintenance or provision of required infrastructure and information technology systems; fluctuations in the price of gold or certain other commodities such as, diesel fuel, natural gas, and electricity; operating or technical difficulties in connection with mining or development activities, including geotechnical challenges and changes to production estimates (which assume accuracy of projected ore grade, mining rates, recovery timing and recovery rate estimates and may be impacted by unscheduled maintenance); changes in foreign exchange rates (particularly the Canadian dollar, U.S. dollar and Mexican peso); the impact of inflation; geopolitical conflicts; employee and community relations; the impact of litigation and administrative proceedings (including but not limited to mining reform laws in Mexico) and any interim or final court, arbitral and/or administrative decisions; disruptions affecting operations; availability of and increased costs associated with mining inputs and labour; delays in construction decisions and any development of the Project; changes with respect to the intended method of mining and processing ore from the Project; inherent risks and hazards associated with mining and mineral processing including environmental hazards, industrial accidents, unusual or unexpected formations, pressures and cave-ins; the risk that the Company's mines may not perform as planned; uncertainty with the Company's ability to secure additional capital to execute its business plans; contests over title to properties; expropriation or nationalization of property; political or economic developments in Canada and Mexico and other jurisdictions in which the Company may carry on business in the future; increased costs and risks related to the potential impact of climate change; the costs and timing of exploration, construction and development of new deposits; risk of loss due to sabotage, protests and other civil disturbances; the impact of global liquidity and credit availability and the values of assets and liabilities based on projected future cash flows; risks arising from holding derivative instruments; and business opportunities that may be pursued by the Company. There can be no assurances that such statements will prove accurate and, therefore, readers are advised to rely on their own evaluation of such

uncertainties. Discovery does not assume any obligation to update any forward-looking statements except as required under applicable laws. The risks and uncertainties that may affect forward-looking statements, or the material factors or assumptions used to develop such forward-looking information, are described under the heading "Risks Factors" in the Company's Annual Information Form dated March 30, 2023, which is available under the Company's issuer profile on SEDAR+ at [www.sedarplus.ca](http://www.sedarplus.ca).

Mineral Resource estimates reported herein have been classified as Measured, Indicated, or Inferred, and Mineral Reserve estimates reported herein have been classified as Proven or Probable, in each case based on the confidence of the input data, geological interpretation, and grade estimation parameters. The Mineral Resource and Mineral Reserve estimates were prepared in accordance with NI 43-101 and classifications adopted by the CIM Council. Statements regarding the results of the feasibility study ("FS") are Forward Looking Statements, as are the anticipated capital and operating costs, sustaining costs, net present value, internal rate of return, payback period, process capacity, average annual metal production, average process recoveries, concession renewal, permitting of the Cordero project, anticipated mining and processing methods, proposed pre-feasibility study production schedule and metal production profile, anticipated construction period, anticipated mine life, expected recoveries and grades, anticipated production rates, infrastructure, social and environmental impact studies, availability of labour, tax rates and commodity prices that would support development of the Cordero project. Information concerning mineral resource or reserve estimates and the economic analysis thereof contained in the results of the FS are also Forward Looking Statements in that they reflect a prediction of the mineralization that would be encountered, and the results of mining, if a mineral deposit were developed and mined. Forward-looking statements are statements that are not historical facts which address events, results, outcomes, or developments that the Company expects to occur.

Gernot Wober, P. Geo. V.P. Exploration, Discovery Silver Corp., is the Company's designated Qualified Person within the meaning of National Instrument 43-101 Standards of Disclosure for Mineral Projects ("NI 43-101") and has reviewed and validated that the information contained herein is accurate. All sources of data contained herein are from Discovery Silver unless otherwise noted.

## References (used through current presentation):

- The most recent resource estimate and mineral reserve estimate for the Cordero project were press released on February 20, 2024. Resource commodity prices of Ag - \$24.00/oz, Au - \$1,800/oz, Pb - \$1.10/lb, Zn - \$1.20/lb. Reserve commodity prices of Ag - \$22.00/oz, Au - \$1,600/oz, Pb - \$1.00/lb, Zn - \$1.20/lb. Summary tables can be found in the Appendices. A technical report will be posted on Discovery's website and filed on SEDAR within 45 days of the press release.
- AgEq for sulphide mineral resources is calculated as  $Ag + (Au \times 15.52) + (Pb \times 32.15) + (Zn \times 34.68)$ ; these factors are based on commodity prices of Ag - \$24.00/oz, Au - \$1,800/oz, Pb - \$1.10/lb, Zn - \$1.20/lb and assumed recoveries of Ag - 87%, Au - 18%, Pb - 89% and Zn - 88%. AgEq for oxide mineral resources is calculated as  $Ag + (Au \times 22.88) + (Pb \times 19.71) + (Zn \times 49.39)$ ; this factor is based on commodity prices of Ag - \$24.00/oz and Au - \$1,800/oz and assumed recoveries of Ag - 59%, Au - 18%, Pb - 37% and Zn - 85%.
- AgEq Produced is metal recovered in concentrate. AgEq Payable is metal payable from concentrate and incorporates metal payment terms outlined in the Feasibility Study press release dated February 20, 2024. AgEq Produced and AgEq Payable are calculated as  $Ag + (Au \times 72.7) + (Pb \times 45.5) + (Zn \times 54.6)$ ; these factors are based on (\$US): \$22.00/oz Ag, \$1.20/lb Zn, \$1.00/lb Pb, \$1,600/oz Au.
- FS by Ausenco Engineering Canada Inc., as press released on February 20, 2024. FS commodity prices (\$US): \$22.00/oz Ag, \$1.20/lb Zn, \$1.00/lb Pb, \$1,600/oz Au. A technical report is posted on Discovery's website and has been filed on SEDAR.
- AISC is calculated as  $[\text{Operating costs (mining, processing and G\&A)} + \text{Royalties} + \text{Concentrate Transportation} + \text{Treatment \& Refining Charges} + \text{Concentrate Penalties} + \text{Sustaining Capital (excluding \$37M of capex for the purchase of the initial mining fleet in Y1)} + \text{Closure Costs}] / \text{Payable AgEq ounces}$
- Free cash flow - Free Cash Flow is a non-GAAP performance measure that is calculated as cash flows from operations net of cash flows invested in mineral property, plant and equipment and exploration and evaluation assets. The Company believes that this measure is useful to the external users in assessing the Company's ability to generate cash flows from its mineral projects

# Discovery Silver Corp.

## The Cordero Silver Project

World's largest undeveloped silver reserve

Located in prolific mining belt in northern Mexico

Feasibility Study released February 2024

Permitting process progressing



# A World-Leading Silver Development Project

**Cordero - a large-scale, low-cost, capital-efficient project that generates excellent returns**



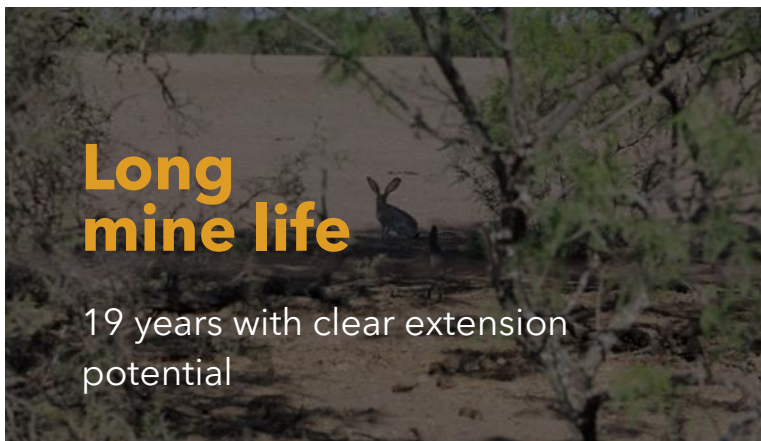
**Large-scale production**  
37Moz AgEq produced annually  
(Years 1 - 12)

**Excellent profitability**  
Average AISC <\$12.50/oz  
(Years 1 - 8)



**Exceptional economics**  
After-tax NPV(5%) of \$1.2 billion  
growing to \$2.2 billion in Year 4

**Low capital intensity**  
NPV(5%) to Capex ratio of 2x



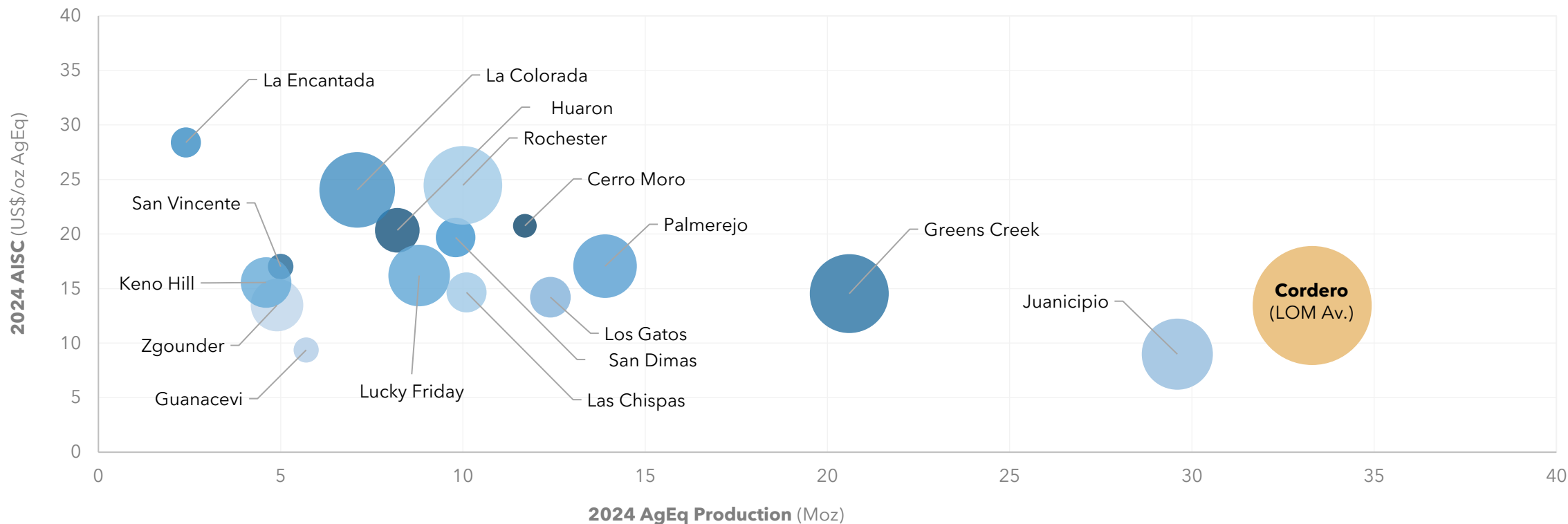
**Long mine life**  
19 years with clear extension potential

**Major economic contributor**  
Significant job creation, capital investment, purchasing of goods and services and taxes paid

# Large Scale & Low Cost

**Cordero is uniquely positioned in the silver space based on its volume of production, low costs and resource size**

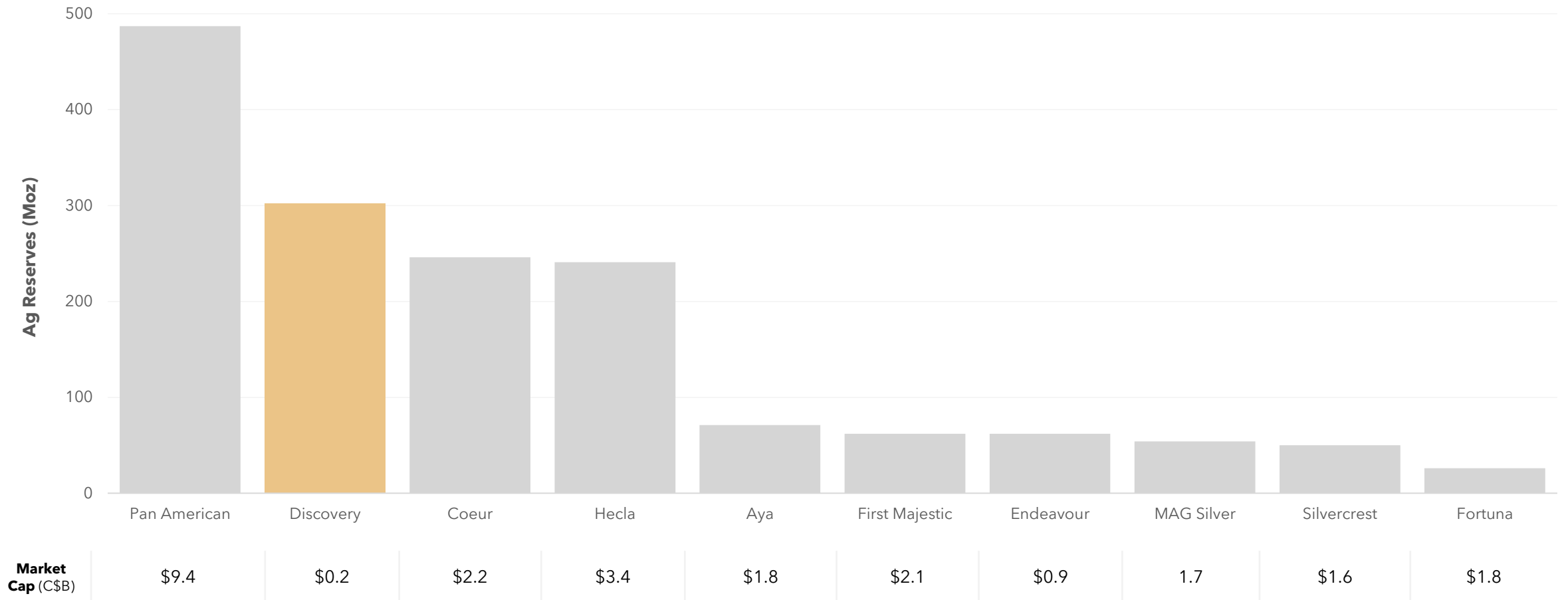
**AgEq Production & AISC & Ag Resource (M&I)<sup>1</sup>**



1. Source: AgEq production and AISC sourced from BMO Capital Markets Equity Research and street consensus. Cordero AgEq production is annual average and AISC is LOM average. M&I silver resource is sourced from Company reports and is inclusive of reserves.

# Silver Reserves vs. Producer Peers

**Second highest reserve base among North American listed silver producers**



Source: Company reports, Market cap is based stock prices on September 3, 2024

# 2024 Work Program

## Work program focused on permitting, engineering and project financing



### Permitting

- Environmental Impact Assessment (MIA) submitted in August 2023
- Submission of Change of Land Use (CUS) pending



### Project De-risking

- Front-end Engineering Design to enable ordering long lead-time items
- Engineering related to enhanced power generation and water treatment



### Project Financing

- All financing options being advanced; equity, debt, offtake, partnerships, streams & strategic alternatives

# Responsible Water Management

## Minimal impact on local water resources

- Treated wastewater to be primary source of water for Cordero operation
- Bringing technology and investment in infrastructure to support improved water treatment in the community
- >85% of water used will be recycled





# Environmental Leadership

- 3<sup>rd</sup> party reviews used to ensure leading environmental practices
- Evaluating use of solar farms, electrification & trolley assist
- Investing US\$130M on site restoration
- Awards: Quality Environmental Award by PROFEPA<sup>1</sup>  
Socially Responsible Enterprise Distinction<sup>2</sup>  
Great Place to Work Certification<sup>3</sup>



# Generational Socio-Economic Benefits

>2,500

Jobs created during construction

>1,000

Jobs created during operations

US\$1.4Bn

Total investment life-of-mine

US\$4Bn

Local purchasing; indirect jobs/supply chains

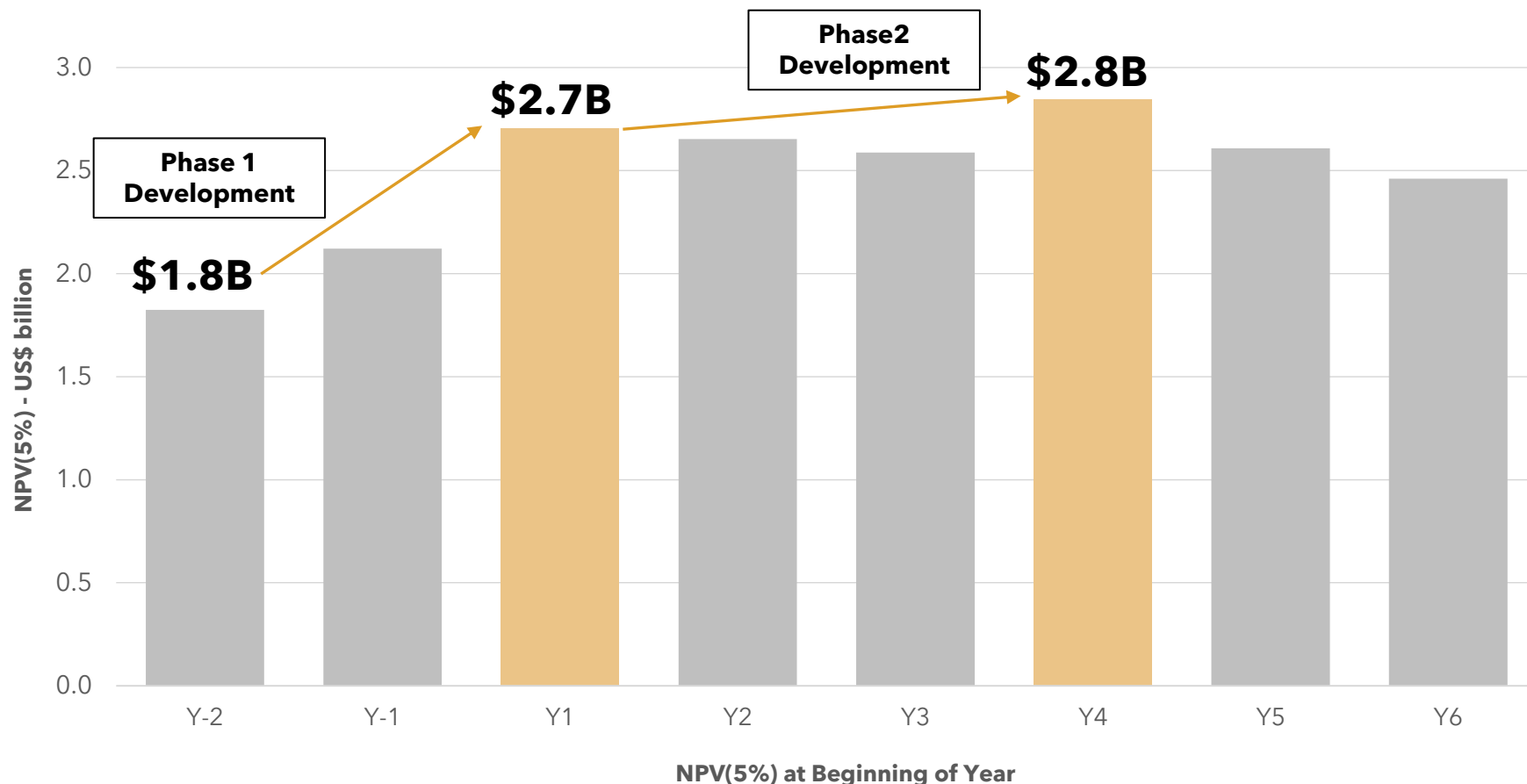
US\$2.0Bn<sup>1</sup>

Tax revenue paid to gov'ts in Mexico



# After-tax NPV Accretion & Silver Price Leverage

**After-tax NPV(5%) of \$1.2B at US\$22/oz Ag, growing to \$2.2B in Year 4**



**At current spot metal prices<sup>1</sup>:**

- NPV(5%) of US\$1.8Bn
- NPV(5%) grows to US\$2.8Bn in Year 4

1. Current spot metal prices as of September 3, 2024, include: silver: US\$28.00 per ounce; gold: US\$2,492 per ounce, zinc: US\$1.29 per pound and lead: US\$0.94 per pound versus Feasibility Study prices of silver: US\$22.00 per ounce; gold: US\$1,600 per ounce; zinc: US\$1.20 per pound; lead: US\$1.00 per pound.

# Value Proposition



**P/NAV (consensus): 0.2x**

**Cash balance: ~C\$35 M**

Ticker: DSV-TSX, DSVSF-OTCQX

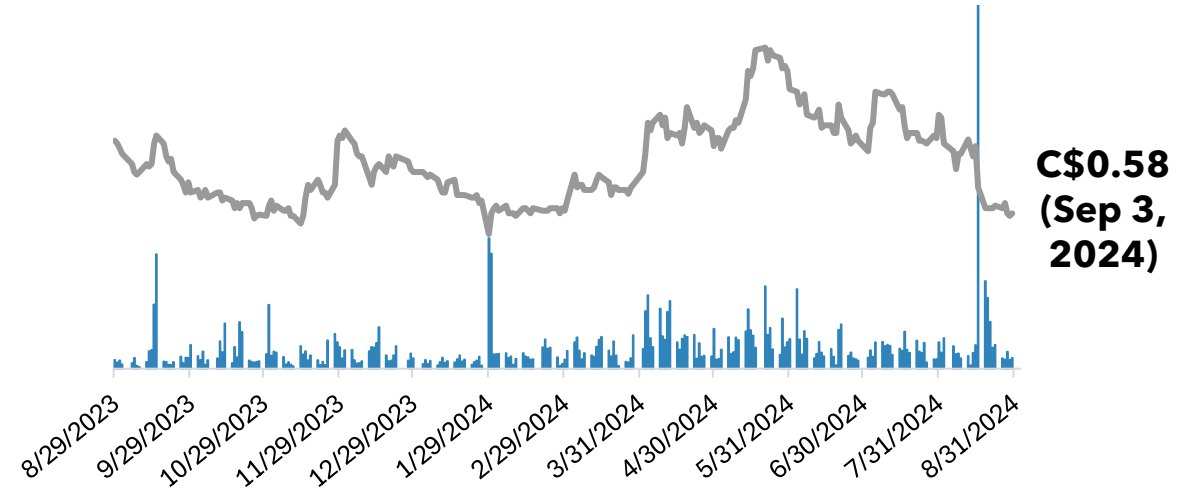
Share price: C\$0.58 (Sept. 3, 2024)

Shares outstanding: 399 M

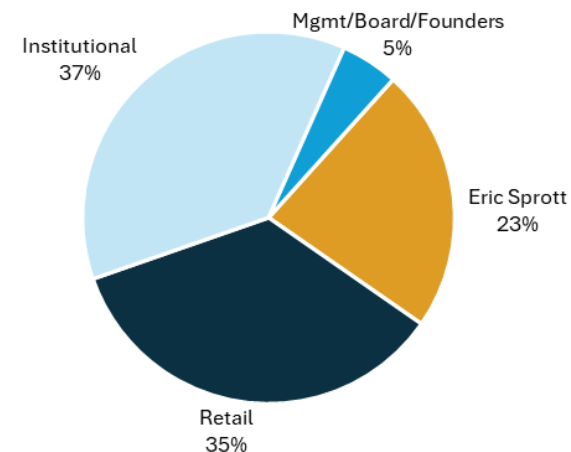
Fully diluted shares outstanding: 424 M

Basic market capitalization: C\$231 M

**1 Year Share Price Performance**



**Ownership**



Do you have any  
questions?

[info@discoverysilver.com](mailto:info@discoverysilver.com)

416 613 9410

# Experienced Management Team

---

## **Tony Makuch**

### **President, CEO & Director**

+35 years in mining incl. President & CEO of Kirkland Lake Gold (2016 - 2022)

## **Andreas L'Abbé**

### **CFO & Corporate Secretary**

+15 years in financial management & operations

## **Roman Solis**

### **SVP, Mexico**

+20 years mining operations & exploration in Mexico

## **Dimitry Demianyuk**

### **VP Projects**

+20 years in project development and management

## **Forbes Gemmell**

### **VP, Corp. Development**

+20 years in capital markets and mining

## **José Jabalera**

### **VP, Corp. Affairs & Sustainability, Mexico**

+15 years in senior federal and state government position in Mexico

## **Gord Leavoy**

### **VP Mineral Processing**

+40 years of processing & tailings experience incl. Kirkland Lake Gold

## **Mark Utting**

### **VP Investor Relations**

+35 years in IR, corporate communications and finance

## **Gernot Wober**

### **VP Exploration**

+35 years in exploration, incl. Osisko Mining

# Experienced Board of Directors

## **Murray John** **Chairman**

+35 years in capital markets & executive management

## **Tony Makuch** **President, CEO & Director**

+35 years in mining incl. President & CEO of Kirkland Lake Gold (2016 - 2022)

## **Barry Olson** **Director**

Former SVP with Goldcorp, oversaw Penasquito build

## **Jeff Parr** **Director**

Current Vice-Chair of Agnico Eagle

## **Moira Smith** **Director**

+30 years in exploration incl. Tech and Fronteer

## **Daniel Vickerman** **Director**

+20 years in capital markets & mining

## **Jennifer Wagner** **Director**

+15 years in legal and compliance incl. Kirkland Lake Gold

## **Jon Gill** **Advisor to the Board**

+50 years in mining and current director of Agnico Eagle

## **Mike Neumann** **Advisor to the Board**

+40 years in mining with focus on Mexico

# Favourable Outlook for Silver

## Favourable market fundamentals driving significant increase in silver price



- 1 Year increase: 17%
- YTD 2024 increase: 21%

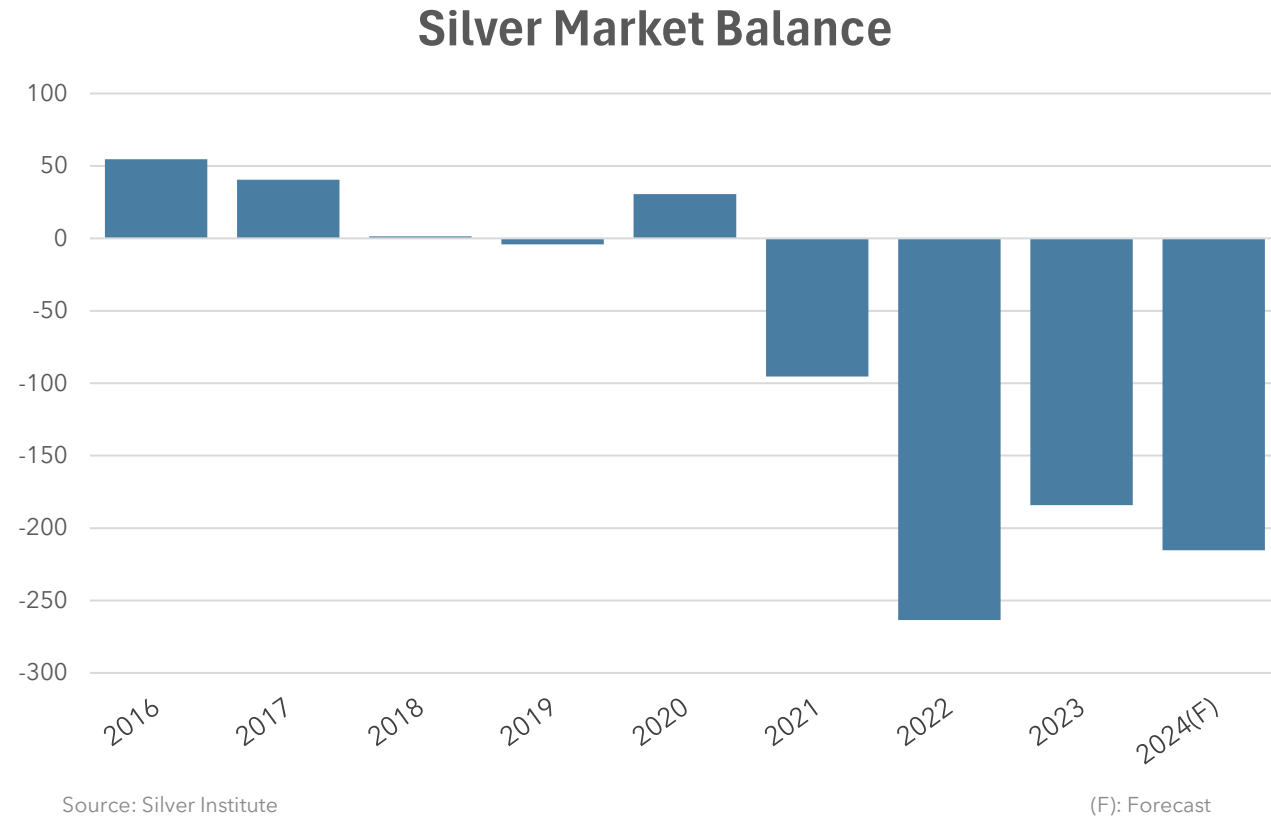
Source: Yahoo Finance



# Silver Demand Outstripping Supply

**On track from a fourth consecutive year of market deficits in 2024**

- Silver is critical for use in solar, BEVs and other green energy sources
- Silver market to be in deficit for the 4<sup>th</sup> consecutive year in 2024<sup>2</sup>
- Cordero can play a key role in providing needed supply to meet growing demand



# Operating & Production Metrics

Poised to become a top 3 global silver producer

	Unit	2024 FS
Mine Life	(years)	19
Ore Tonnes	(Mt)	327
Strip Ratio	(w:o)	2.0
Silver Produced - Life of Mine	(Moz)	259
Lead Produced - Life of Mine	(Blb)	2.6
Zinc Produced - Life of Mine	(Blb)	4.4
Silver-equivalent Produced - Life of Mine	(Moz)	635
Silver Produced - Life of Mine	(Moz pa)	13.6
Lead Produced - Life of Mine	(Mlb pa)	135
Zinc Produced - Life of Mine	(Mlb pa)	233
Silver-equivalent Produced - Life of Mine	(Moz pa)	33



# Financial Metrics

**Cordero is a large-scale, capital-efficient project with low costs that is expected to generate substantial free cash flow**

	Unit	2024 FS
Silver Price	(US\$/oz)	\$22.00
NPV(5%) - After-tax	(US\$M)	\$1,177
IRR - After-tax	(%)	22.0%
Payback - After-tax	(years)	5.2
Initial Capex	(US\$M)	\$606
Expansion Capex	(US\$M)	\$309
Sustaining Capex - Life of Mine	(US\$M)	\$388
Total Capex - Life of Mine	(US\$M)	\$1,302
AISC Y1 - Y8 - Co-product	(US\$/AgEq oz)	\$12.48
AISC Y1 - Y8 - Net of by-products	(US\$/Ag oz)	\$0.34
AISC Life of Mine - Co-product	(US\$/AgEq oz)	\$13.47
AISC Life of Mine - Net of by-products	(US\$/Ag oz)	\$1.77



# Capex Summary

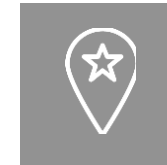
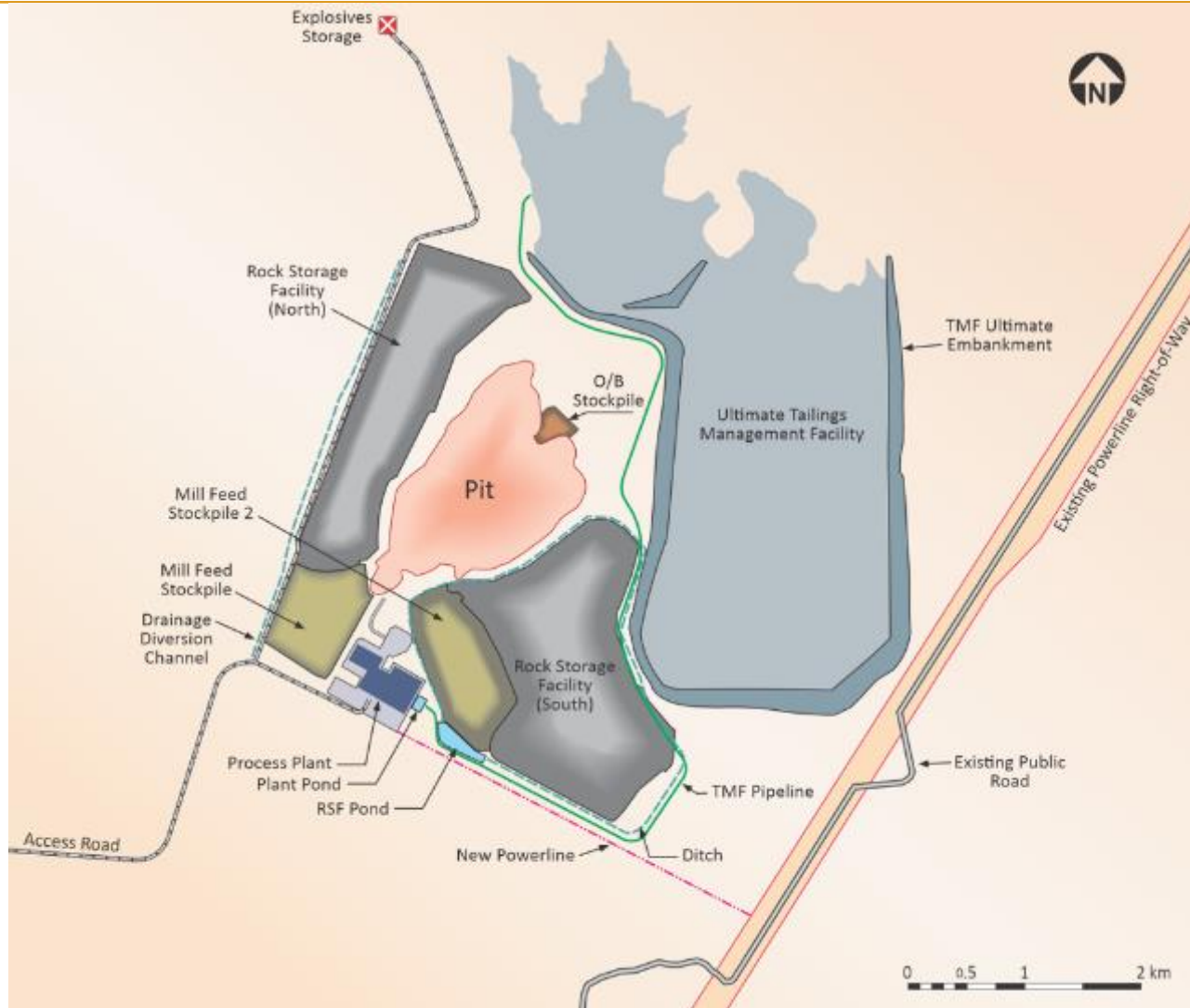
**Highly capital efficient project with an NPV to Capex ratio of 2x**

	INITIAL	EXPANSION	SUSTAINING	TOTAL LOM
<b>CAPITAL EXPENDITURES</b> (US\$ M)				
Mining	\$117	\$2	\$110	\$229
On-site Infrastructure	\$44	\$14	-	\$57
Process Plant	\$210	\$148	-	\$359
Tailings Management	\$28	\$60	\$221	\$310
Offsite Infrastructure	\$57	-	\$16	\$73
Project Indirects	\$73	\$44	\$11	\$128
Owner's Costs	\$11	\$4	-	\$14
Contingency	\$65	\$37	\$31	\$133
Closure costs/Salvage value	-	-	\$75	\$75
<b>TOTAL CAPEX</b>	<b>\$606</b>	<b>\$309</b>	<b>\$463</b>	<b>\$1,377</b>

### Capital efficiency driven by:

- Staged expansion of process plant
- Simple and conventional process design
- Competent bedrock
- Thin overburden minimizes required earthworks
- Gentle topography
- Deposit comes to surface, resulting in minimal pre-strip
- Established infrastructure locally
- Proximity to the mining town of Parral (no need for large camp at site)

# Site Layout



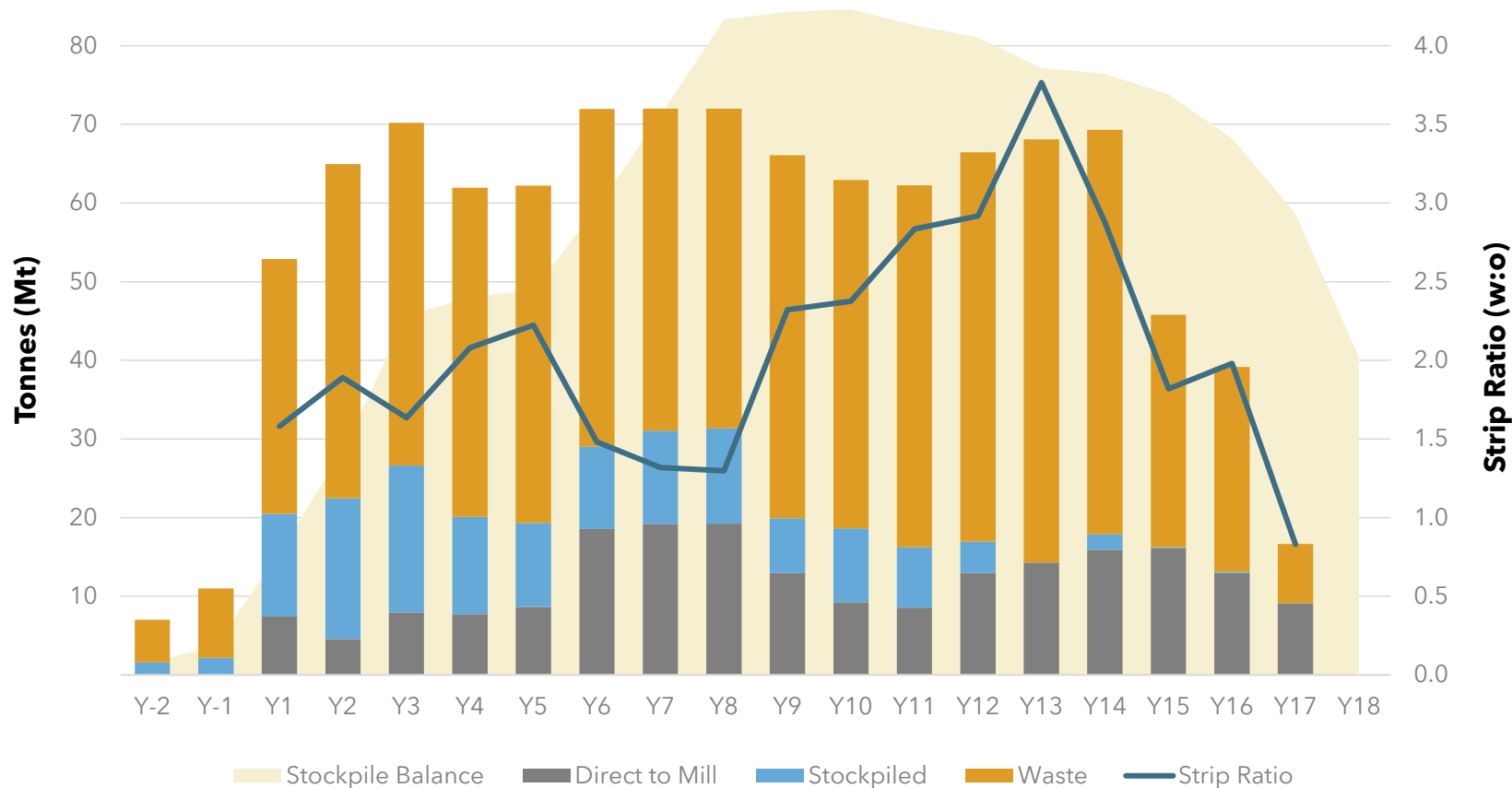
## Site layout benefits from:

- Gentle topography
- Competent bedrock
- Non-acid generating waste rock
- Ample availability of borrow material
- No major relocation of infrastructure, lakes or waterways required

# Process Site Layout



## Straight-forward executable mine plan with steady mining rate



- Average strip ratio of 2.0:1 over life of mine
- Stockpiling of low-grade material allows higher grade material to be fed to mill earlier
- Steady mining rate of ~70Mt per annum

# Metallurgical Performance

## High recoveries achieved through conventional flotation at a coarse grind size

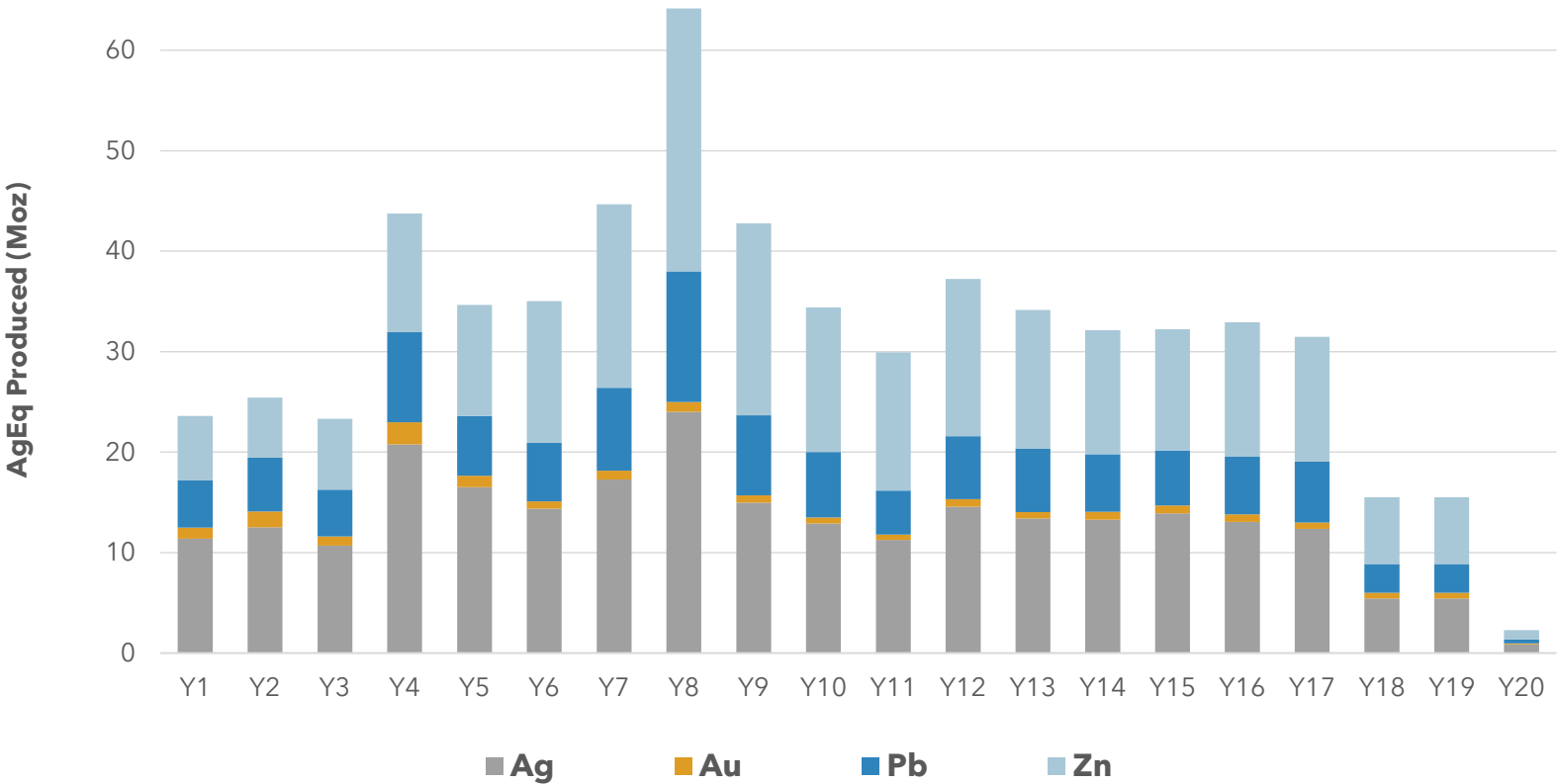
- Positive relationship between head grade and recoveries
- ~90% of recovered Ag is recovered to Precious Metals concentrate where highest payabilities are achieved
- Recoveries achieved at a coarse grind size with low reagent dosages

	Y1 - Y4	Life of Mine
<b>Ag recovery - Total</b>	91%	87%
Ag recovery - Precious Metals con	83%	77%
Ag recovery - Zn con	8%	10%
<b>Pb recovery</b>	91%	86%
<b>Zn recovery</b>	85%	85%



# Metal Production

**At 33Moz AgEq of average annual production, Cordero will be one of the world's largest silver mines**



- 33Moz AgEq average annual production
- 64Moz AgEq peak annual production
- 635Moz AgEq life of mine production
- Silver represents +50% of net smelter return in Y1 - Y4 and +45% over the life of mine

# Concentrate Marketing

## High demand expected for clean saleable concentrates

- Significant volumes of clean Ag-Pb and Zn concentrates expected to have significant demand from local buyers and offshore smelters/traders
- Penalties make up less than 0.4% of gross revenues
- Assumed treatment charges and refining costs (TCRCs) for FS significantly higher than current spot TCRCs
- Average annual concentrate volumes
  - Ag-Pb con: 120,000 dry metric tonnes
  - Zn con: 210,000 dry metric tonnes

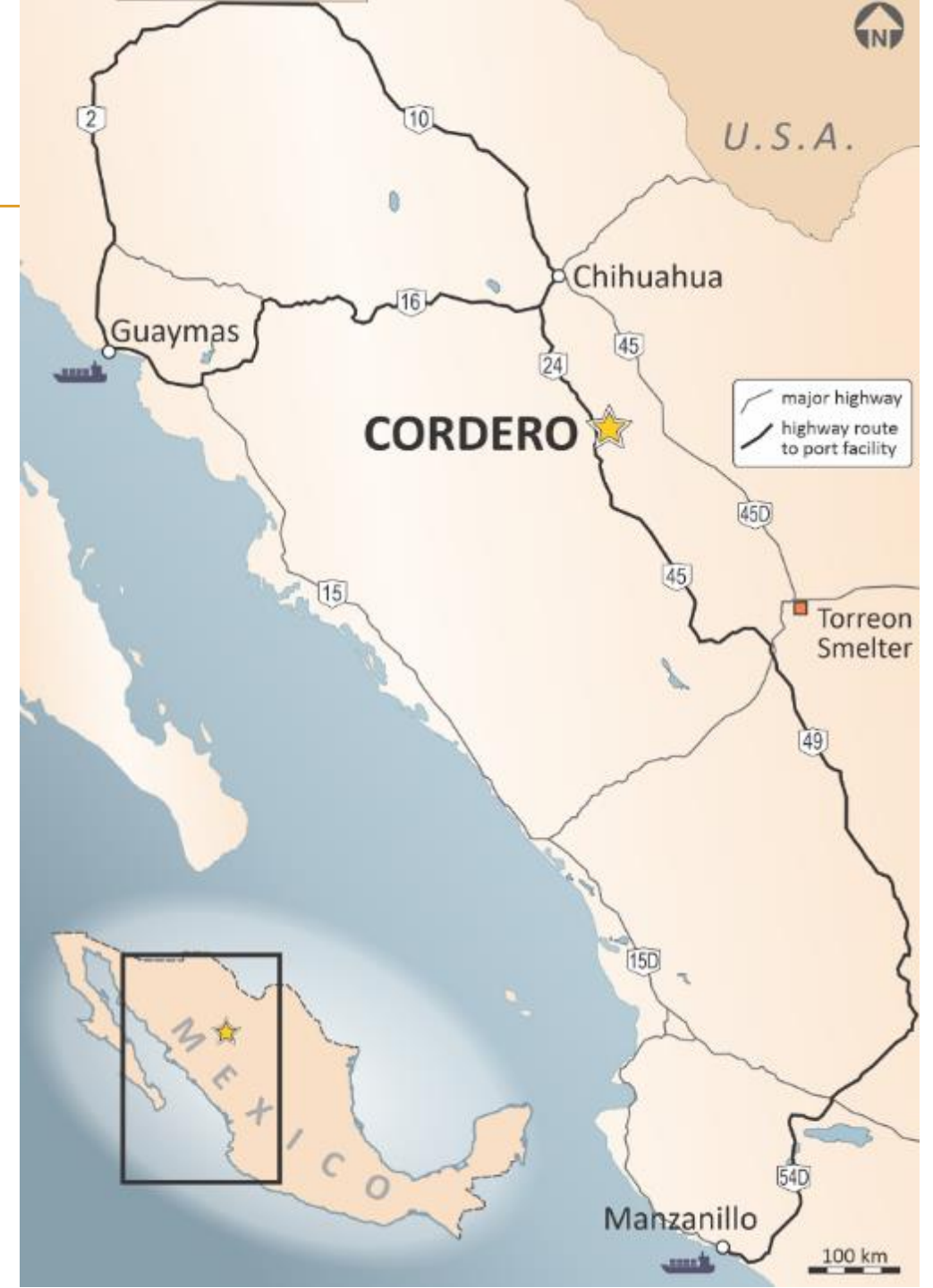
	Ag	Au	Pb	Zn
<b>Precious Metals Concentrate</b>				
Concentrate grades	3,062 g/t	2.05 g/t	50%	–
Payable metal	95%	95%	95%	–
Minimum deduction	50 g/t	1 g/t	3 units	–
<b>Zinc Concentrate</b>				
Concentrate grades	231 g/t	0.62 g/t	–	50%
Payable metal	70%	70%	–	85%
Deduction	3 oz/t	1 g/t	–	8 units
PARAMETER	UNITS	FS COST	SPOT	5-YEAR BENCHMARK AVERAGE
<b>Treatment/Refining Charges</b>				
Treatment charge - PM con	\$/dmt	\$120	~\$25	~\$130
Treatment charge - Zn con	\$/dmt	\$200	~\$90	~\$215
Ag refining charge - PM con	\$/oz	\$1.00	~\$1.00	~\$1.05

# Concentrate Logistics

**Both onshore and offshore options to be pursued for concentrate delivery**

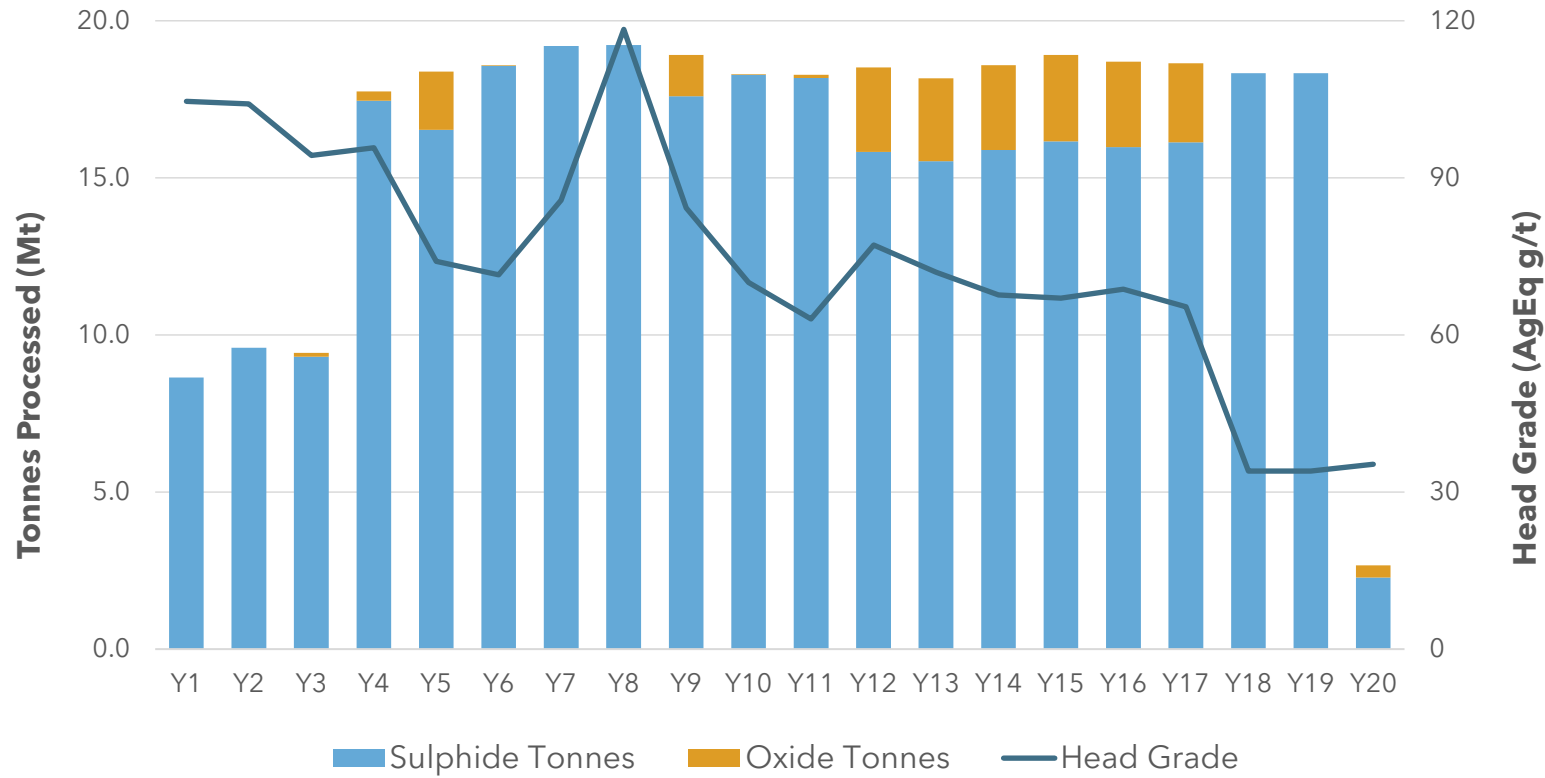


- In-country smelters include Torreon lead-zinc smelter owned by Penoles and the San Luis Potosi zinc smelter (central Mexico) owned by Grupo Mexico
- Concentrate for offshore to be trucked to either Guaymas or Manzanillo for shipping
- Offshore destination options include Japan, Korea, China, Europe and Canada



# Process Throughput

## High head grades in initial years drive early cash flow



- Average head grade +100 g/t AgEq in Y1 - Y3
- Mill expansion complete by Y4; expansion can be accelerated or deferred as required
- Slight throughput variations depending on work index of ore feed

# Operating Costs

**Costs benefit from a large-scale operation with a low strip ratio and excellent metallurgy**

ITEM	UNIT COST		LOM COST
<b>Mining Cost</b>	\$2.35	(\$/t mined)	\$2,406M
	\$7.35	(\$/t processed)	
<b>Processing Costs</b>			
Phase 1 - 26ktpd	\$6.56	(\$/t processed)	\$2,056M
Phase 2 - 51ktpd	\$6.24	(\$/t processed)	
<b>Site G&amp;A</b>			
Phase 1 - 26ktpd	\$0.97	(\$/t processed)	\$192M
Phase 2 - 51ktpd	\$0.54	(\$/t processed)	

**Mining cost**

- Generated from first principles
- Assumes owner-operated mining with lease financing

**Processing cost**

- Based on detailed comminution & flotation testwork
- Costs benefit from large scale, a simple flowsheet, coarse grind size and low reagent consumption

**Site G&A cost**

- Generated from first principles
- Costs benefit from only a small camp and administration office required at site

# Project Economics

**Attractive project economics with after-tax NPV(5%) of \$1.2 billion and IRR of 22%**

	Unit	FS
NPV(5%) - After-tax	(US\$B)	\$1.2
IRR - After-tax	(%)	22.0%
Payback - After-tax	(years)	5.2
Free Cash Flow - After-tax	(US\$B)	\$2.3
NPV(5%) - Pre-tax	(US\$B)	\$2.0
IRR - Pre-tax	(%)	29.4%
Payback - Pre-tax	(years)	4.1
Free Cash Flow - Pre-tax	(US\$B)	\$3.7
AISC Y1 - Y8 - Co-product	(US\$/AgEq oz)	\$12.48
AISC Y1 - Y8 - Net of by-products	(US\$/Ag oz)	\$0.34
AISC Life of Mine - Co-product	(US\$/AgEq oz)	\$13.47
AISC Life of Mine - Net of by-products	(US\$/Ag oz)	\$1.77

- Financial metrics based on Ag - \$22/oz, Pb - \$1.00/lb and Zn - \$1.20/lb
- Payback period currently delayed due to timing of mill expansion build in Y3
- Opportunity to delay mill expansion for project financing purposes if required
- AISC <\$12.50/AgEq oz in Y1 - Y8 places Cordero in the bottom half of cost curve

# Commodity Price Leverage

## Unparalleled leverage to rising silver prices

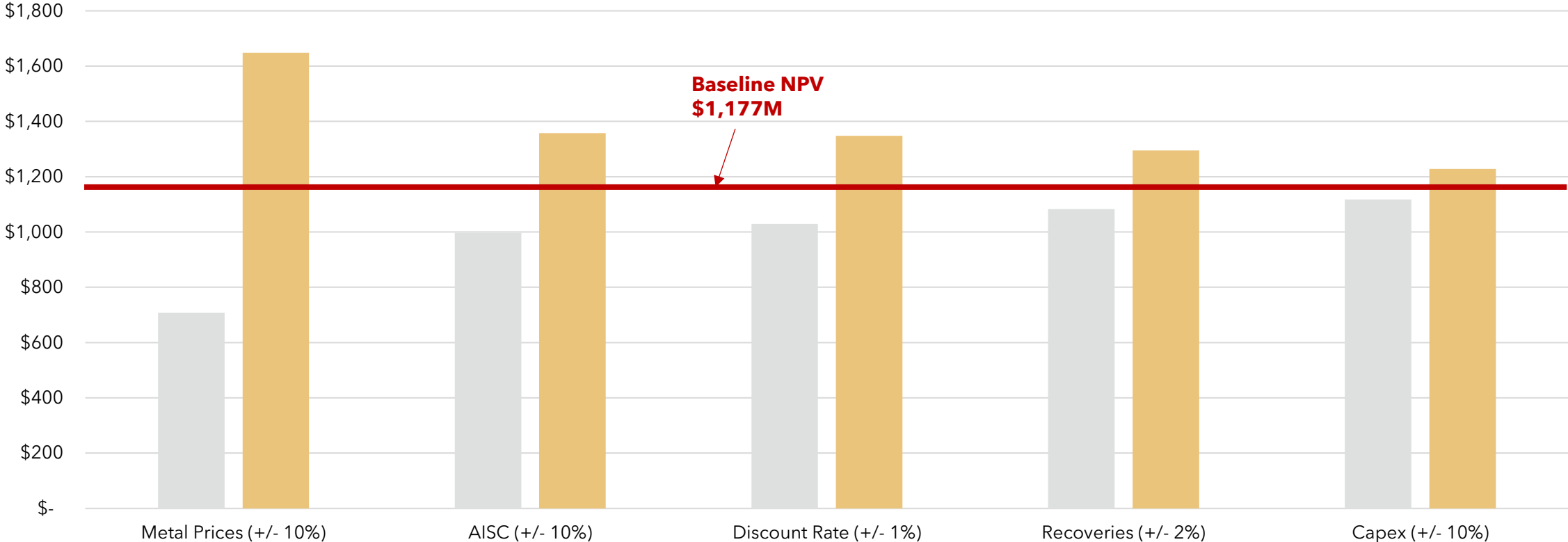
NPV/IRR/Payback sensitivity to Ag/Zn prices: (Fixed prices for Au = \$1,600/oz & Pb = \$1.00/lb)

		Ag (\$/oz)														
		\$18.00			\$20.00			\$22.00			\$25.00			\$30.00		
		NPV (5%) (US\$M)	IRR (%)	Payback (yrs)	NPV (5%) (US\$M)	IRR (%)	Payback (yrs)	NPV (5%) (US\$M)	IRR (%)	Payback (yrs)	NPV (5%) (US\$M)	IRR (%)	Payback (yrs)	NPV (5%) (US\$M)	IRR (%)	Payback (yrs)
Zn (\$/lb)	\$1.05	\$602	14.7	6.9	\$784	17.2	6.3	\$965	19.7	5.8	\$1,237	23.1	4.8	\$1,690	28.5	4.1
	\$1.10	\$673	15.6	6.7	\$854	18.1	6.2	\$1,036	20.4	5.6	\$1,308	23.8	4.8	\$1,761	29.2	4.0
	\$1.20	\$814	17.4	6.4	\$996	19.7	5.9	<b>\$1,177</b>	<b>22.0</b>	<b>5.2</b>	\$1,449	25.2	4.6	\$1,902	30.5	3.9
	\$1.30	\$955	18.9	6.1	\$1,137	21.2	5.5	\$1,318	23.4	4.9	\$1,590	26.6	4.4	\$2,043	31.7	3.8
	\$1.45	\$1,167	21.2	5.7	\$1,348	23.4	5.1	\$1,530	25.5	4.7	\$1,802	28.6	4.2	\$2,254	33.5	3.7

NPV(5%) upside estimates do NOT include the mine life extension generated by a larger pit at higher silver prices.

# Financial Sensitivities

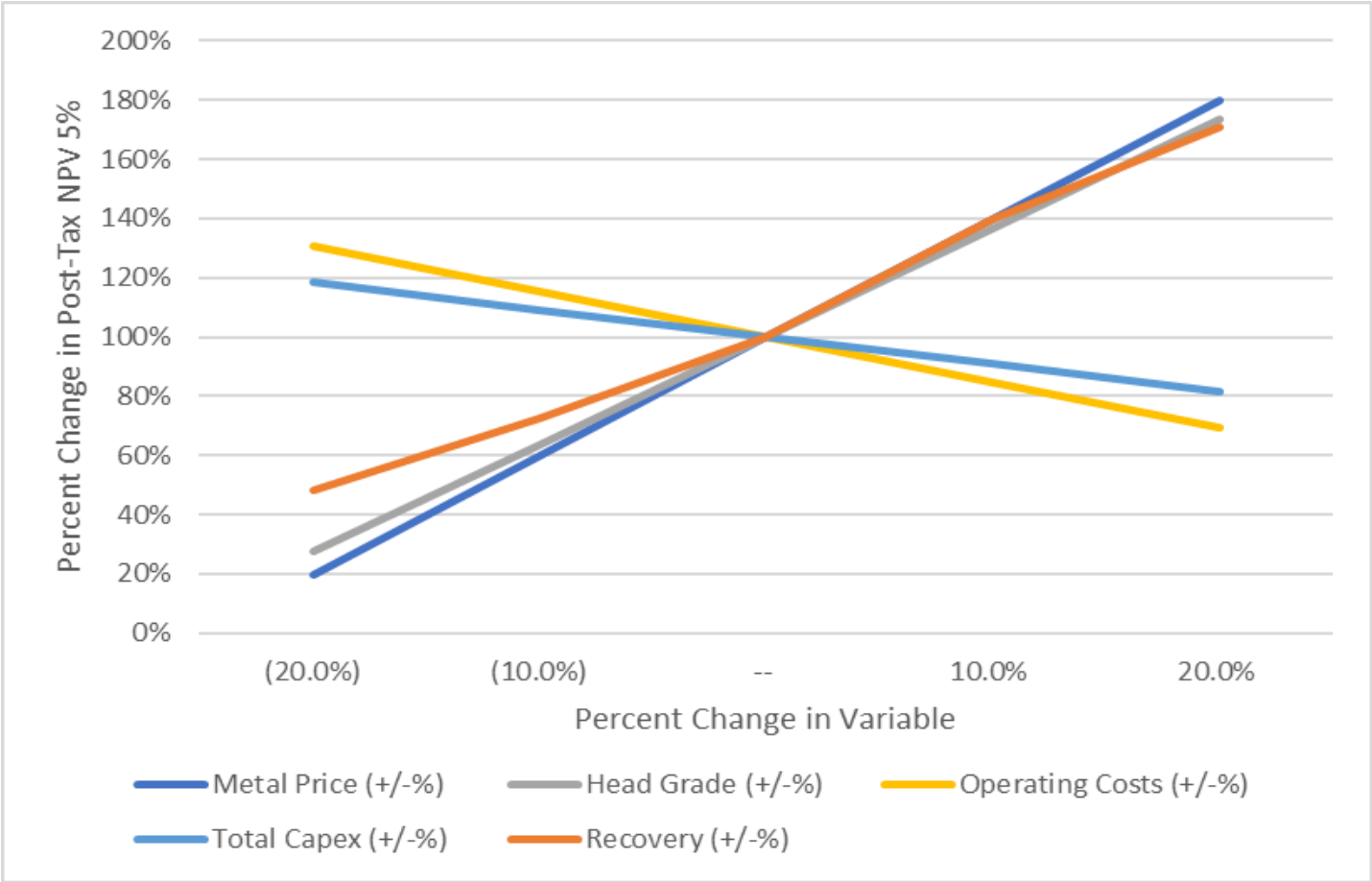
## After-tax NPV(5%) sensitivities to changes to key inputs





# Commodity Price Leverage

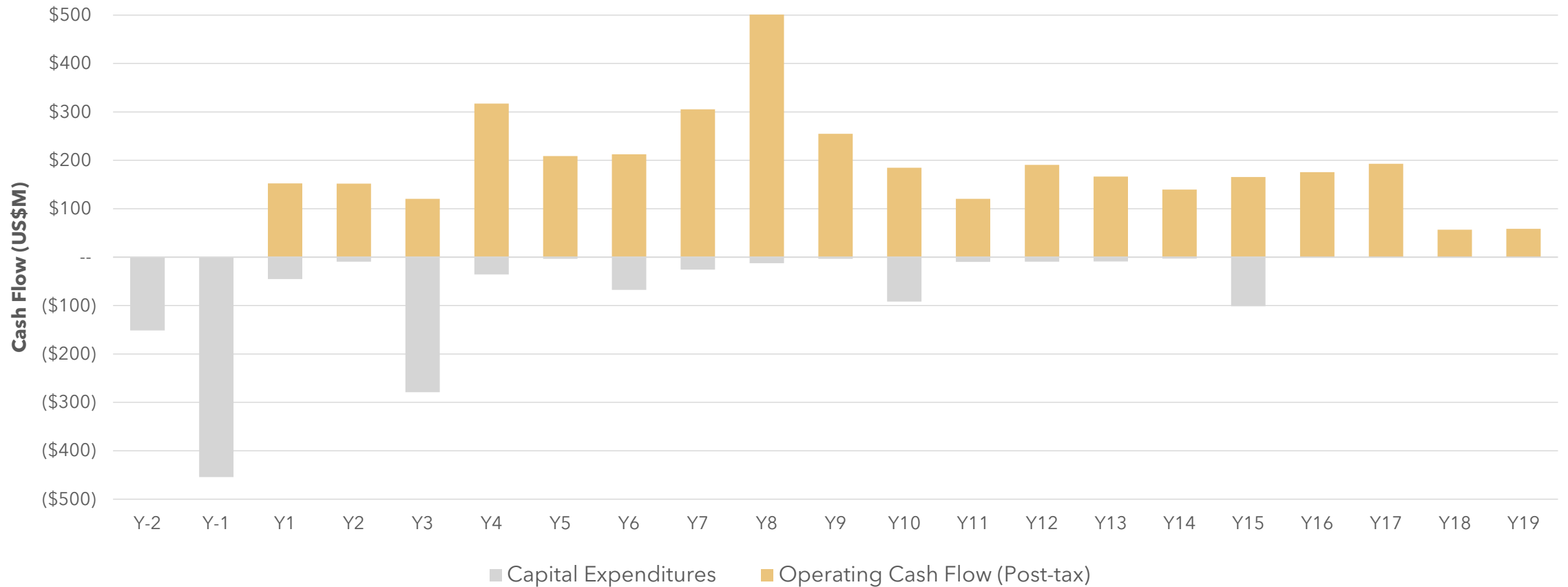
## Unparalleled leverage to rising silver prices



# After-tax Free Cash Flow



**Total after-tax free cash flow of US\$2.3 billion over the life of mine**



# Resource Statement



MATERIAL	CLASS	TONNES (Mt)	GRADE					CONTAINED METAL				
			Ag (g/t)	Au (g/t)	Pb (%)	Zn (%)	AgEq (g/t)	Ag (Moz)	Au (koz)	Pb (Mlb)	Zn (Mlb)	AgEq (Moz)
OXIDE	Measured	29	29	0.07	0.23	0.27	<b>49</b>	27	67	148	171	<b>45</b>
	Indicated	37	24	0.06	0.25	0.29	<b>44</b>	28	74	207	241	<b>53</b>
	<b>M&amp;I</b>	<b>66</b>	<b>26</b>	<b>0.07</b>	<b>0.24</b>	<b>0.28</b>	<b>46</b>	<b>55</b>	<b>142</b>	<b>355</b>	<b>412</b>	<b>99</b>
	<b>Inferred</b>	<b>32</b>	<b>19</b>	<b>0.03</b>	<b>0.26</b>	<b>0.33</b>	<b>42</b>	<b>20</b>	<b>35</b>	<b>188</b>	<b>234</b>	<b>43</b>
SULPHIDE	Measured	324	24	0.07	0.34	0.63	<b>57</b>	247	745	2,413	4,473	<b>598</b>
	Indicated	329	18	0.04	0.28	0.58	<b>48</b>	190	416	2,045	4,215	<b>506</b>
	<b>M&amp;I</b>	<b>653</b>	<b>21</b>	<b>0.06</b>	<b>0.31</b>	<b>0.60</b>	<b>53</b>	<b>437</b>	<b>1,161</b>	<b>4,458</b>	<b>8,687</b>	<b>1,104</b>
	<b>Inferred</b>	<b>116</b>	<b>12</b>	<b>0.02</b>	<b>0.16</b>	<b>0.35</b>	<b>30</b>	<b>45</b>	<b>86</b>	<b>418</b>	<b>906</b>	<b>111</b>
TOTAL	Measured	353	24	0.07	0.33	0.60	57	274	812	2,561	4,644	643
	Indicated	366	19	0.04	0.28	0.55	47	218	490	2,252	4,456	559
	<b>M&amp;I</b>	<b>719</b>	<b>21</b>	<b>0.06</b>	<b>0.30</b>	<b>0.57</b>	<b>52</b>	<b>493</b>	<b>1,303</b>	<b>4,813</b>	<b>9,099</b>	<b>1,202</b>
	<b>Inferred</b>	<b>149</b>	<b>14</b>	<b>0.03</b>	<b>0.18</b>	<b>0.35</b>	<b>32</b>	<b>65</b>	<b>121</b>	<b>606</b>	<b>1,140</b>	<b>155</b>

## Mineral Resource Estimates are inclusive of Reserves

### Net Smelter Return (NSR cut-off)

- NSR - Net revenue less treatment costs & refining charges
- Oxide & Sulphide resource cut-off: \$7.25/t

## Pit constraint assumptions

- Ag - \$24.00/oz, Au - \$1,800/oz, Pb - \$1.10/lb, Zn - \$1.20/lb
- Recovery assumptions: Ag - 87%, Au - 18%, Pb - 89% and Zn - 88%. AgEq for sulphide mineralization and Ag - 59%, Au - 18%, Pb - 37% and Zn - 85% for oxide mineralization
- Operating costs: Mining costs of \$1.59/t for ore and waste, Processing costs of \$5.22/t and G&A costs: \$0.86/t

# Reserves Statement



MATERIAL	CLASS	TONNES (Mt)	GRADE				CONTAINED METAL			
			Ag (g/t)	Au (g/t)	Pb (%)	Zn (%)	Ag (Moz)	Au (koz)	Pb (Mlb)	Zn (Mlb)
OXIDE	Proven	10	46	0.08	0.35	0.38	15	0.03	0.08	0.09
	Probable	10	40	0.09	0.40	0.42	13	0.03	0.09	0.09
	<b>Total P&amp;P</b>	<b>20</b>	<b>43</b>	<b>0.08</b>	<b>0.37</b>	<b>0.40</b>	<b>28</b>	<b>0.05</b>	<b>0.17</b>	<b>0.18</b>
SULPHIDE	Proven	212	29	0.09	0.42	0.74	199	0.61	1.96	3.48
	Probable	95	24	0.06	0.40	0.73	74	0.18	0.83	1.53
	<b>Total P&amp;P</b>	<b>307</b>	<b>28</b>	<b>0.08</b>	<b>0.41</b>	<b>0.74</b>	<b>274</b>	<b>0.78</b>	<b>2.79</b>	<b>5.00</b>
TOTAL	Proven	223	30	0.09	0.42	0.73	214	0.64	2.04	3.57
	Probable	104	26	0.06	0.40	0.70	87	0.20	0.91	1.62
	<b>Total P&amp;P</b>	<b>327</b>	<b>29</b>	<b>0.08</b>	<b>0.41</b>	<b>0.72</b>	<b>302</b>	<b>0.84</b>	<b>2.96</b>	<b>5.18</b>

## Net Smelter Return (NSR cut-off)

- NSR - Net revenue less treatment costs & refining charges
- Oxide & Sulphide NSR cut-off: \$10.00/t

## Pit constraint assumptions

- Ag - \$20.00/oz, Au - \$1,600/oz, Pb - \$0.95/lb, Zn - \$1.20/lb
- The metallurgical recoveries were varied according to head grade and concentrate grades. Lead concentrate recoveries for sulphide material were approximately 87.5%, 73.9% and 12.6% for lead, silver and gold respectively. Zinc concentrate recoveries for sulphide material were approximately 95.0%, 14.3% and 9.5% for zinc, silver and gold respectively. Oxide recoveries to zinc concentrates were 85%, 9% and 8% for zinc, silver, and gold respectively. Oxide recoveries to lead concentrates were 37%, 50% and 10% for lead, silver, and gold respectively..
- Operating costs: The life-of-mine mining cost averaged US\$2.35/t mined, processing costs, G&A and closure costs were US\$7.28/t ore